

## CX3CL1

### Rabbit Anti-Mouse Chemokine Ligand 1 Neutralizing pAb

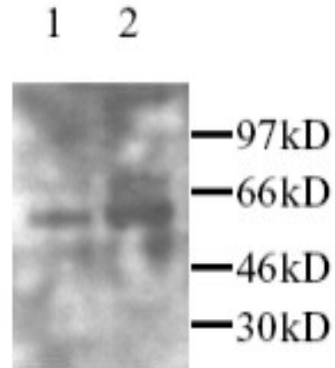
<b>Catalog No.</b>	CPF202	<b>Quantity:</b>	500 µg
<b>Alternate Names:</b>	Fractalkine, Neurotactin, CXC3, CXC3C, NTN, NTT, SCYD1		
<b>Gene ID:</b>	20312		
<b>Description:</b>	Rabbit Anti-Mouse CX3CL1 Neutralizing polyclonal antibody. CX3CL1 is a membrane-bound CX3C chemokine. The mature protein is part of a 397-amino acid precursor consisting of a chemokine domain (76 amino acids), a mucin stalk of 241 residues, a putative transmembrane domain (18 amino acids), and an intracellular tail of 37 amino acids. Within the chemokine domain the first two cysteine residues are separated by 3 amino acids. Fractalkine message is found at high concentrations in the brain, and also in kidney, lung and heart. Fractalkine is chemotactic for monocytes and may play a role in brain inflammation.		
<b>Specificity:</b>	Recombinant and natural mouse CX3CL1		
<b>Host:</b>	Rabbit		
<b>Immunogen:</b>	Recombinant chemotactic domain of mouse CX3CL1		
<b>Isotype:</b>	IgG		
<b>Formulation:</b>	Lyophilized with 0.1% sodium azide. Precaution: Sodium azide is a poisonous and hazardous substance which should be handled by trained staff only.		
<b>Purification:</b>	Protein A purified		
<b>Reconstitution:</b>	<b>Centrifuge vial prior to opening.</b> Add 500 µl PBS to the vial to fully solubilize the antibody.		
<b>Cross-Reactivity:</b>	Less than 30% cross-reactivity to human and rat CX3CL1. Cross-reactivity to CX3CL1 of other species has not been determined.		
<b>Applications:</b>	Western Blot Immunoprecipitation Immunohistochemistry		
<b>Application Notes:</b>	For Western Blot, use a working dilution of 1:1,000-1:2,000. For Immunoprecipitation, use a working dilution of 1:300-1:800. For Immunohistochemistry, use a working dilution of 1:100-1:500. The optimal concentration should be determined by the user for each specific application.		



**Storage & Stability:**

Store at 2-4°C for short term storage or in working aliquots at -20°C for long term storage. **Avoid repeated freeze-thaw cycles.**

Western Blot detection of CX3CL1 in rat (Lane 1) and mouse (Lane 2) brain



**NOT FOR HUMAN USE. FOR RESEARCH ONLY. NOT FOR DIAGNOSTIC OR THERAPEUTIC USE.**

