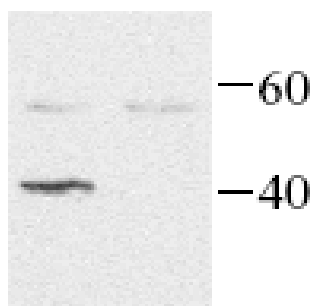


## Rabbit Anti-Human Galpha-i2 Polyclonal Antibody

<b>Catalog No.</b>	CPG201	<b>Quantity:</b>	200 µg
<b>Description:</b>	This polyclonal antibody, which reacts with the Gai2 protein, was generated using <i>E. Coli</i> expressed human Gai2 (a.a. 231-351) as an immunogen. Gai2 is a 40-41 kDa alpha-subunit of heterotrimeric protein, that shares sequence homology with Gai3 and Gai1. All these G proteins can be ADP-ribosylated at the carboxy terminal Cys of the CAAX sequence, interfering with receptor coupling. Gai2 is expressed widely in tissues and cell lines. Activation of PLC-b by Gaicoupled receptors is the result of release of Gbg subunits from Gai. Gai2 regulates potassium channel activation. Mutation at Arg179 has been identified in tumors. This and the Q205L mutant inhibit adenylyl cyclase.		
<b>Formulation:</b>	Protein A purified rabbit IgG, 200 mg, with 0.1% sodium azide, lyophilized.		
<b>Cross-Reactivity:</b>	Cross-reacts with Gai3, and partially with Gai1.		
<b>Reconstitution:</b>	Reconstitute to 1 mg/ml by adding 200 µl PBS.		
<b>Applications:</b>	The tested titer for Western blot is 1:5,000. The Ab can also be used for immunoprecipitation.		
<b>Storage &amp; Stability:</b>	4°C for short term storage or -20°C in small aliquots for long term storage. Avoid repeated freeze and thaw cycles.		
<b>References:</b>	Search <a href="#">PubMed</a> (MEDLINE) for references to this product.		

**Please note: always centrifuge vials before opening.**

Human Gai2 detected by Western blot in transfected HEK293 cells.  
(left lane)



NOT FOR HUMAN USE. FOR RESEARCH ONLY. NOT FOR DIAGNOSTIC OR THERAPEUTIC USE.

