

LGALS1

Rabbit Anti-Human Galectin-1 Protein A Purified pAb

| | | | |
|--------------------|---------|------------------|--------|
| Catalog No. | CPH003A | Quantity: | 100 µg |
| | CPH003B | | 200 µg |

Alternate Names: GAL1, GBP

Description: The Galectins constitute a large family of carbohydrate-binding proteins with specificity for N-acetyl-lactosamine-containing glycoproteins. At least 14 mammalian Galectins, which share structural similarities in their carbohydrate recognition domains (CRD), have been identified to date. Galectins lack a classical signal peptide and can be localized to the cytosolic compartments where they have intracellular functions. However, via one or more as yet unidentified nonclassical secretory pathways, galectins can also be secreted to function extracellularly. Individual members of the Galectin family have different tissue distribution profile and exhibit subtle differences in their carbohydrate binding specificities. Galectin1, also known as L14, BHL and Galaptin, is a monomeric or homodimeric prototype Galectin that is expressed in a variety of cells and tissues including muscle, heart, liver, prostate, lymph nodes, spleen, thymus, placenta, testis, retina, macrophages, B cells, T cells, dendritic cells and tumor cells. It preferentially binds laminin, fibronectin, 90K/Mac2BP, CD45, CD43, CD7, CD2, CD3 and Ganglioside GM1. Galectin1 modulates cell growth and proliferation, either positively or negatively, depending on the cell type and activation status. Galectin1 has immunosuppressive and anti-inflammatory properties and has been shown to suppress acute and chronic inflammation and autoimmunity. Human and mouse galectin1 share about 88% amino acid sequence similarity.

Gene ID: 3956

Specificity: Human Galectin-1

Host: Rabbit

Immunogen: Highly pure (>95%) recombinant human Galectin-1 (Ala2-Asp135) derived from *E. coli*.

Isotype: IgG

Formulation: Lyophilized from 3 mM PBS, pH 7.2

Purification: Protein A purified

Reconstitution: **Centrifuge vial prior to opening.** Reconstitute in sterile water to a concentration of 0.1 -1.0 mg/ml.

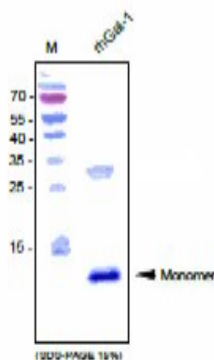


Applications: WB

Application Notes: Western Blot:
Use 1-5 µg/ml
The optimal concentration should be determined by the user for each specific application.

Application Notes: The lyophilized antibody is stable at room temperature for up to 1 month. The reconstituted antibody is stable for at least two weeks at 2-8°C. Frozen aliquots are stable for at least 6 months when stored at -20°C. **Avoid repeated freeze-thaw cycles.**

Western blot analysis of recombinant human Galectin-1 using Rabbit Anti-Human Galectin-1 pAb.



NOT FOR HUMAN USE. FOR RESEARCH ONLY. NOT FOR DIAGNOSTIC OR THERAPEUTIC USE.