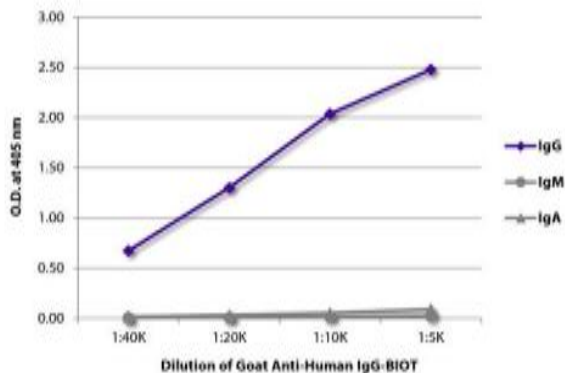


## Goat Anti-Human IgG (Ads) Biotin

<b>Catalog No.</b>	CPH014	<b>Quantity:</b>	1.0 mg
<b>Description:</b>	Goat Anti-Human IgG (Ads) Biotin. Pooled antisera from goats hyperimmunized with human IgG. Cross absorbed on human IgM, and IgA. Purified by affinity chromatography on human IgG covalently linked to agarose.		
<b>Concentration:</b>	500 µg/mL		
<b>Specificity:</b>	Reacts with the heavy chain of human IgG		
<b>Immunogen:</b>	Human IgG		
<b>Isotype:</b>	Goat IgG		
<b>Conjugate:</b>	Biotin		
<b>Formulation:</b>	Liquid volume of 2.0 mL supplied in PBS/NaN <sub>3</sub> .		
<b>Isotype Control</b>	Goat IgG-Biotin		
<b>Cross-Reactivity:</b>	May react with IgG from other species.		
<b>Applications:</b>	Applications for this product include ELISA, FLISA, Flow Cytometry, and Immunohistochemistry.		
<b>Application Notes:</b>	Working dilution for ELISA 1:5,000 - 1:20,000, FLISA with FITC, AF488, or AF555 conjugates 1:100 - 1:400, Flow Cytometry ≤ 1 µg/10 <sup>6</sup> cells in suggested volume of 100 µL. Since applications vary, you should determine the optimum working dilution for the product that is appropriate for your specific need.		
<b>Storage &amp; Stability:</b>	Store at 2-8°C. For long term storage at -20°C, aliquot into smaller volumes to avoid multiple freeze/thaw cycles.		

ELISA plate was coated with purified human IgG, IgM, and IgA. Immunoglobulins were detected with serially diluted Goat Anti-Human IgG-BIOT followed by Streptavidin-HRP (Cat. No. CPO016).



NOT FOR HUMAN USE. FOR RESEARCH ONLY. NOT FOR DIAGNOSTIC OR THERAPEUTIC USE.

