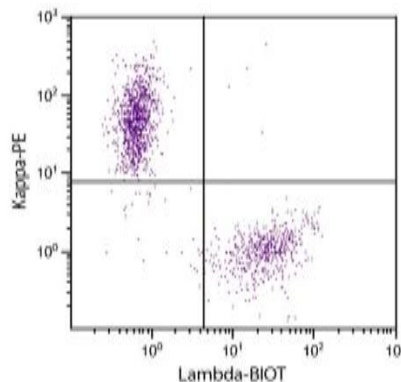


## Goat Anti-Human Lambda (Ads) Biotin pAb

<b>Catalog No.</b>	CPH022	<b>Quantity:</b>	1.0 mg
<b>Description:</b>	Goat Anti-Human Lambda (Ads) Biotin pAb. Pooled antisera from goats hyperimmunized with human $\lambda$ light chains. Cross absorbed on human $\kappa$ light chains and mouse immunoglobulins. Purified by affinity chromatography on human $\lambda$ light chains linked to agarose.		
<b>Concentration:</b>	500 $\mu$ g/mL		
<b>Specificity:</b>	Reacts with human $\lambda$ light chains		
<b>Immunogen:</b>	human $\lambda$ light chains		
<b>Isotype:</b>	Goat IgG		
<b>Conjugate:</b>	Biotin		
<b>Formulation:</b>	Liquid volume of 2.0 mL supplied in PBS/NaN <sub>3</sub> .		
<b>Isotype Control</b>	Goat IgG-Biotin		
<b>Cross-Reactivity:</b>	May react with $\lambda$ light chains from other species.		
<b>Applications:</b>	Applications include ELISA, FLISA, Flow Cytometry.		
<b>Application Notes:</b>	Working dilution for ELISA 1:5,000 - 1:20,000, for FLISA with FITC conjugate 1:200 - 1:400, for Flow Cytometry $\leq$ 1 $\mu$ g/10 <sup>6</sup> cells in suggested volume of 100 $\mu$ L. Since applications vary, you should determine the optimum working dilution for the product that is appropriate for your specific need.		
<b>Storage &amp; Stability:</b>	Store at 2-8°C. For long term storage at -20°C, aliquot into smaller volumes to avoid multiple freeze/thaw cycles.		

CD19+ human B-lymphocytes were stained with Goat Anti-Human Lambda Biotin and Goat F(ab')<sub>2</sub> Anti-Human Kappa PE followed by Streptavidin-FITC (Cat. No. CPO014).



NOT FOR HUMAN USE. FOR RESEARCH ONLY. NOT FOR DIAGNOSTIC OR THERAPEUTIC USE.

