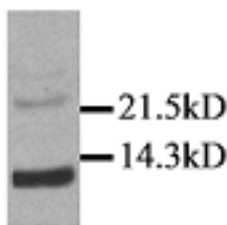


## IL15

### Rabbit Anti-Mouse Interleukin-15 pAb

<b>Catalog No.</b>	CPI100	<b>Quantity:</b>	200 µg
<b>Alternate Names:</b>	IL-15		
<b>Description:</b>	The rabbit polyclonal antibody recognizes mouse Interleukin-15 (IL-15). IL-15 is a member of the four alpha-helical bundle family of cytokines. It is very similar to IL-2, except that IL-15 has an IL-15 alpha receptor subunit. It plays an important role in the growth and differentiation of T and B lymphocytes, natural killer cells, macrophages, and monocytes as well as activation of a number of important intracellular signaling molecules. This implies that IL-15 could be essential for the immune responses, allograft rejection, and the pathogenesis of autoimmune diseases.		
<b>Gene ID:</b>	16168		
<b>UniProtKB:</b>	P48346		
<b>Conjugate:</b>	Unconjugated		
<b>Specificity:</b>	Mouse IL-15, a 14-15 kDa protein.		
<b>Host:</b>	Rabbit		
<b>Isotype:</b>	IgG		
<b>Immunogen:</b>	Recombinant Mouse IL-15		
<b>Formulation:</b>	Lyophilized from a sterile filtered solution containing 0.05% sodium azide.		
<b>Purification:</b>	Protein A purified		
<b>Reconstitution:</b>	<b>Centrifuge vial prior to opening.</b> Reconstitute to 1 mg/mL by adding 200 µL of distilled water.		
<b>Applications:</b>	Western Blot (WB), Neutralization		
<b>Application Notes:</b>	WB: Recommended dilution of 1:5,000. The optimal concentration should be determined by the user for each specific application.		
<b>Storage &amp; Stability:</b>	Store at 2-8 °C for short term or in working aliquots below -20 °C for up to one year. <b>Avoid repeated freeze-thaw cycles.</b>		
<b>Statement:</b>	PPE is recommended when working with products containing sodium azide.		

Mouse IL-15 is detected by Western Blot in transfectant supernatant.



NOT FOR HUMAN USE. FOR RESEARCH ONLY. NOT FOR DIAGNOSTIC OR THERAPEUTIC USE.

