

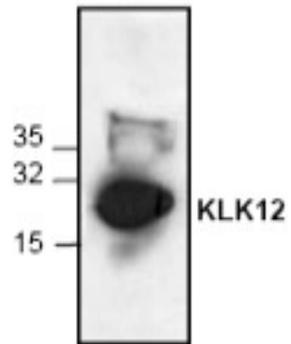
KLK12

Rabbit Anti-Human Kallikrein-Related Peptidase 12 Affinity Purified pAb

Catalog No.	CPK100	Quantity:	100 µg
Alternate Names:	Kallikrein 12, KLK-L5, KLKL5		
Gene ID:	43849		
Description:	Rabbit Anti-Human KLK12 Affinity Purified polyclonal antibody. The human KLK gene family encodes about 15 serine proteases and has the potential to serve as cancer biomarkers. The Kallikrein 12 is one the KLK members located on chromosome 19. Different splice variants of the KLK12 produce three transcript variants encoding different isoforms that can be found on amino acid 254, 248 and 110.		
Concentration:	0.5 mg/ml		
Specificity:	Detects ~28 kDa KLK12 with rat kidney tissue lysate and 16 kDa KLK12 isoform with Jurkat and 3T3 cell lysates on SDS-PAGE immunoblots		
Host:	Rabbit		
Immunogen:	Synthetic peptide surrounding amino acid 239 of human KLK12		
Formulation:	Liquid in PBS, pH 7.2 + 30% glycerol + 0.5% BSA + 0.01% thimerosal. Precaution: Thimerosal is a poisonous and hazardous substance which should be handled by trained staff only.		
Purification:	Biospecific affinity chromatography		
Cross-Reactivity:	Reacts with human, mouse, and rat.		
Applications:	Western Blot		
Application Notes:	For Western Blot, use a working dilution of 0.5-4 µg/ml. Blocking Peptide (Cat. No. CPK100BP) is available separately. The optimal concentration should be determined by the user for each specific application.		
Storage & Stability:	Store at -20°C or in working aliquots at -80°C for long term storage. Avoid repeated freeze-thaw cycles.		



Western Blot analysis of KLK12 with rat kidney tissue lysate.



NOT FOR HUMAN USE. FOR RESEARCH ONLY. NOT FOR DIAGNOSTIC OR THERAPEUTIC USE.