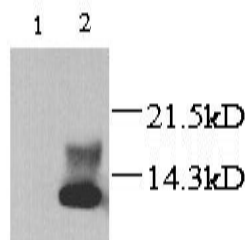


Xcl1

Rabbit Anti-Rat XCL1/Lymphotactin pAb

Catalog No.	CPL101	Quantity:	200 µg
Alternate Names:	SCYC1, SCM-1-alpha, ATAC, XCL1		
Description:	For research use only. This neutralizing polyclonal antibody, which reacts with rat lymphotactin, was generated using E. coli-expressed amino acid 1-92 of mature rat lymphotactin as an immunogen.		
	Lymphotactin (Ltn) is the only C chemokine so far identified that has a single cysteine near the amino terminus. It has 114 amino acids with a 22-amino acid signal peptide. Lymphotactin is produced in activated CD8+ T cells ¹ and NK cell ² . Lymphotactin attracts both T-lymphocytes and NK cells.		
Gene ID:	171371		
Specificity:	Rat		
Host:	rabbit		
Immunogen:	Lymphotactin		
Isotype:	IgG		
Formulation:	Protein A purified rabbit IgG, 200 µg, with 0.1% sodium azide, lyophilized. Precaution: Sodium azide is a poisonous and hazardous substance which should be handled by trained staff only.		
Reconstitution:	Reconstitute to 1 mg/ml by adding 200 µl PBS.		
Cross-Reactivity:	Cross-reactivity to lymphotactin of other species has not been determined.		
Applications:	The tested titer for Western blot is 1:2,000; and 1:500 for immunoprecipitation.		
Storage & Stability:	4°C for short term storage or -20°C in small aliquots for long term storage. Avoid repeated freeze and thaw cycles.		



Rat lymphotactin detected by Western blot in untransfected (1) and transfected (2) cells

NOT FOR HUMAN USE. FOR RESEARCH ONLY. NOT FOR DIAGNOSTIC OR THERAPEUTIC USE.

