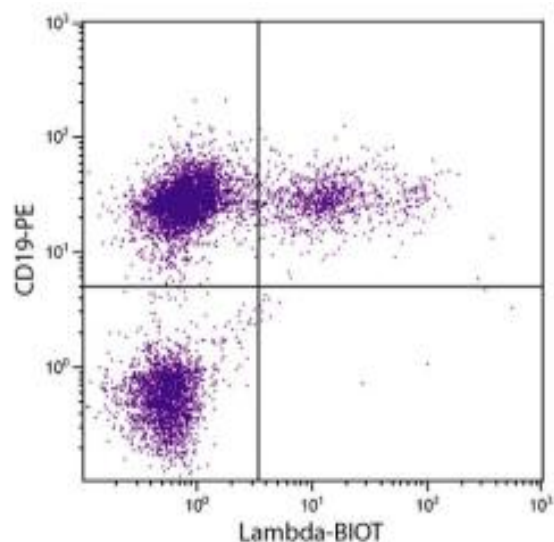
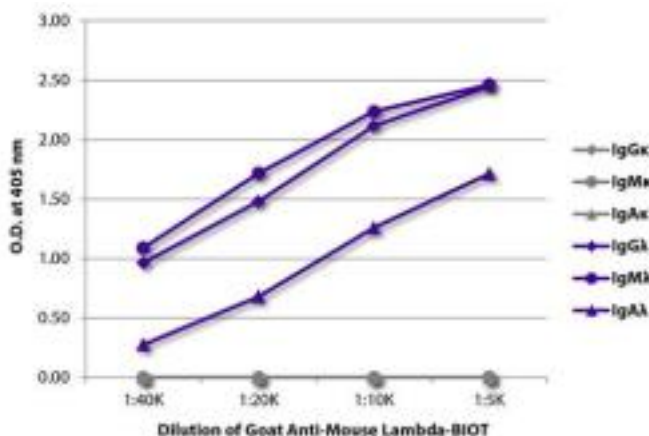


Goat Anti-Mouse Lambda (Ads) Biotin pAb

Catalog No.	CPM026	Quantity:	1.0 mg
Description:	Goat Anti-Mouse Lambda (Ads) Biotin pAb. Pooled antisera from goats hyperimmunized with mouse λ light chains. Cross adsorbed on mouse κ light chains. Purified by affinity chromatography on mouse λ light chains covalently linked to agarose.		
Concentration:	500 μ g/mL		
Specificity:	Reacts with mouse λ light chains		
Immunogen:	Mouse λ light chains		
Isotype:	Goat IgG		
Conjugate:	Biotin		
Formulation:	Liquid volume of 2.0 mL supplied in PBS/NaN ₃ .		
Isotype Control	Goat IgG-Biotin		
Cross-Reactivity:	May react with λ light chains from other species		
Applications:	Applications include ELISA, FLISA, Flow Cytometry, ELISPOT, Immunohistochemistry, Immunocytochemistry, Western Blot, and Immunoprecipitation.		
Application Notes:	Working dilution for ELISA 1:5,000 - 1:20,000, for FLISA with FITC or AF555 conjugate 1:100 - 1:400, for Flow Cytometry with FITC conjugate \leq 1 μ g/10 ⁶ cells in suggested volume of 100 μ L. Since applications vary, you should determine the optimum working dilution for the product that is appropriate for your specific need.		
Storage & Stability:	Store at 2-8°C. For long term storage at -20°C, aliquot into smaller volumes to avoid multiple freeze/thaw cycles.		

ELISA plate was coated with purified mouse IgGk, IgMk, IgAk, IgGλ, IgMλ, and IgAλ. Immunoglobulins were detected with serially diluted Goat Anti-Mouse Lambda-BIOT followed by Streptavidin-HRP (Cat. No. CPO016).

BALB/c mouse splenocytes were stained with Goat Anti-Mouse Lambda-BIOT and Rat Anti-Mouse CD19-PE followed by Streptavidin-FITC (Cat. No. CPO014).



NOT FOR HUMAN USE. FOR RESEARCH ONLY. NOT FOR DIAGNOSTIC OR THERAPEUTIC USE.

