

## MCL1

### Rabbit Anti-Human Mcl-1 Affinity Purified pAb

**Catalog No.** CPM110 **Quantity:** 100 µg

**Alternate Names:** MCL1L, mcl1/EAT, MGC1839, MGC104264, TM, MCL1S, EAT

**Description:** Mcl-1 (Myeloid cell leukemia-1) is a 37 kDa Bcl-2-related protein with an apparent molecular weight of 43 kDa on SDS-PAGE. Mcl-1 was identified as an early-induction gene that increased in expression during the differentiation of human myeloblastic leukemia cell ML-1, or exposure to different DNA damaging agents. The level of Mcl-1 is decreased in peripheral B lymphocytes undergoing apoptosis following treatment with apoptotic stimuli such as TGF-β1 and forskolin. Expression of Mcl-1 is able to delay apoptosis induced by over-expression of c-myc in CHO 5AHSmyc cells. In hematopoietic FDC-P1 cells, Mcl-1 interacts with another Bcl-2-related protein, Bax, and prolongs cell viability after treatment with different apoptotic reagents.

**Concentration:** 0.2 mg/ml

**Host:** Rabbit

**Immunogen:** Synthetic peptide corresponding to residues surrounding amino acids 131 of human MCL1

**Isotype:** IgG

**Formulation:** 100 µg (0.2 mg/ml) affinity purified rabbit anti-Mcl-1 polyclonal antibody in phosphate buffered saline (PBS), pH 7.2, containing 30% glycerol, 0.5% BSA, and 0.01% thiomersal. Precaution: Thiomersal is a poisonous and hazardous substance which should be handled by trained staff only.

**Purification:** Affinity purified

**Cross-Reactivity:** Human, Mouse, Rat, Monkey

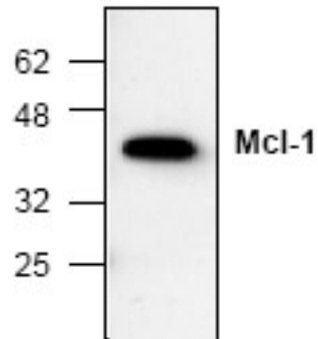
**Applications:** Western Blot  
Immunoprecipitation  
Immunohistochemistry

**Application Notes:** For Western Blot, use a working dilution of 0.5-4 µg/ml.  
For Immunoprecipitation, use a working dilution of 10-20 µg/ml.  
For Immunohistochemistry, use a working dilution of 10-20 µg/ml.  
Blocking Peptide (Cat. No. CPM110BP) is available separately.  
The optimal concentration should be determined by the user for each specific application.

**Storage & Stability:** Store at -20°C or in working aliquots at -80°C for long term storage. **Avoid repeated freeze-thaw cycles.**



Western Blot analysis of MCL1 in Ramos cell lysate



NOT FOR HUMAN USE. FOR RESEARCH ONLY. NOT FOR DIAGNOSTIC OR THERAPEUTIC USE.



**Cell Sciences**<sup>®</sup>  
480 Neponset Street  
Bldg 12A  
Canton, MA 02021

Toll Free: 888-769-1246  
Phone: 781-828-0610  
Fax: 781-828-0542

E-mail: [info@cellsciences.com](mailto:info@cellsciences.com)  
Website: [www.cellsciences.com](http://www.cellsciences.com)