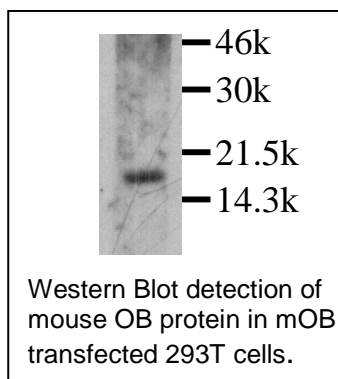


## LEP

### Rabbit Anti-Mouse Leptin pAb

<b>Catalog No.</b>	CPO001	<b>Quantity:</b>	500 µg
<b>Alternate Names:</b>	Leptin		
<b>Gene ID:</b>	16846		
<b>Specificity:</b>	Mouse		
<b>Host:</b>	Rabbit		
<b>Immunogen:</b>	Recombinant OB		
<b>Isotype:</b>	IgG		
<b>Formulation:</b>	Lyophilized with 0.05% sodium azide.		
<b>Purification:</b>	Protein A purified		
<b>Reconstitution:</b>	<b>Centrifuge vial prior to opening.</b> Reconstitute to 1 mg/mL by adding 500 µL H <sub>2</sub> O.		
<b>Cross-Reactivity:</b>	Reacts with recombinant and natural mouse OB. Cross-reactivity to OB of additional species has not been determined.		
<b>Applications:</b>	Western blot: working dilution of 1:2,000. The optimal concentration should be determined by the user for each specific application.		
<b>Storage &amp; Stability:</b>	Upon receipt store at 2-4 °C. For long term store in working aliquots at -20 °C. <b>Avoid repeated freeze-thaw cycles.</b>		



NOT FOR HUMAN USE. FOR RESEARCH ONLY. NOT FOR DIAGNOSTIC OR THERAPEUTIC USE.

