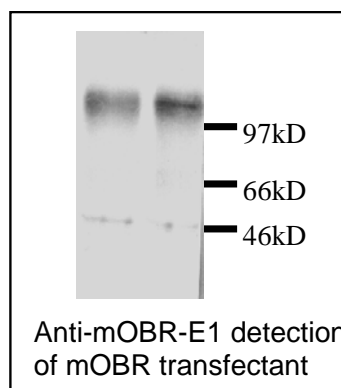


Rabbit Anti-mouse OB Receptor-E1 Polyclonal Antibody

Catalog No.	CPO002	Quantity:	200 µg
Description:	OB (or leptin) is a 16 kDa protein produced primarily in white adipose tissue, but also in brown fat and the placenta. It is first identified by positional cloning. It is involved in regulating the food intake, energy expenditure, whole-body energy balance in rodents and humans. In addition to its metabolic control role, OB also plays important roles in reproduction, immunological response and neuroendocrine signaling.		
Specificity:	Mouse		
Host:	Rabbit		
Immunogen:	<i>E. Coli</i> -expressed recombinant OB receptor, amino acid 25-208		
Isotype:	IgG		
Formulation:	Protein A purified rabbit IgG, 200 µg, with 0.1% sodium azide, lyophilized. Precaution: Sodium azide is a poisonous and hazardous substance which should be handled by trained staff only.		
Reconstitution:	Centrifuge vial prior to opening. Reconstitute to 1 mg/ml by adding 200 µl H ₂ O.		
Cross-Reactivity:	Reacts with recombinant and natural mouse OB receptor. Cross-reactivity to OB receptor of other species has not been determined.		
Storage & Stability:	4°C for short term storage or -20°C in small aliquots for long term storage. Avoid repeated freeze-thaw cycles.		
Applications:	The tested titer for Western blot is 1:2,000. The optimal concentration should be determined by the user for each specific application.		



NOT FOR HUMAN USE. FOR RESEARCH ONLY. NOT FOR DIAGNOSTIC OR THERAPEUTIC USE.