

## PRF1

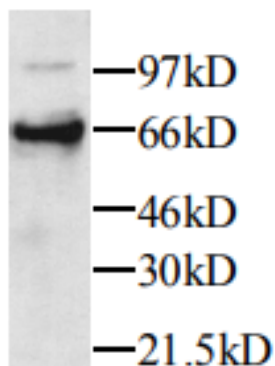
### Rabbit Anti-Rat Perforin 1 Neutralizing pAb

<b>Catalog No.</b>	CPP100	<b>Quantity:</b>	200 µg
<b>Alternate Names:</b>	P1, cytolsin, lymphocyte pore-forming protein		
<b>Description:</b>	Perforin (PRF1) was originally cloned from Mouse cytotoxic T-lymphocyte (CTL). It is a 555-amino acid protein with a 21-amino acid signal peptide. PRF1 is a cytolytic mediator produced by killer lymphocytes, and is stored in and released by cytoplasmic granules. It is involved in the killing mediated by CTL which represents an important mechanism in the immune defense against tumors and virus infections.		
<b>Gene ID:</b>	50669		
<b>UniProtKB:</b>	Q5FVS5		
<b>Specificity:</b>	Rat PRF1		
<b>Host:</b>	Rabbit		
<b>Immunogen:</b>	Recombinant Rat PRF1		
<b>Isotype:</b>	IgG		
<b>Conjugate:</b>	Unconjugated		
<b>Formulation:</b>	Lyophilized with 0.05% sodium azide.		
<b>Purification:</b>	Protein A purified		
<b>Reconstitution:</b>	<b>Centrifuge vial prior to opening.</b> Add 200 µL sterile distilled water to the vial to fully solubilize the antibody to a concentration of 1.0 mg/mL.		
<b>Cross-Reactivity:</b>	Reacts with both mouse and rat perforin.		
<b>Applications:</b>	Western Blot (WB), Immunohistochemistry (IHC)		
<b>Application Notes:</b>	WB: working dilution of 1:1000. IHC: working dilution of 1:100-1:300. The optimal concentration should be determined by the user for each specific application.		

**Storage & Stability:** Store at 4 °C for short term or in working aliquots at -20 °C for long term storage. **Avoid repeated freeze-thaw cycles.**



Western blot detection of rat perforin from kidney tissue lysate on Day 3 in glomerular nephritis model.



NOT FOR HUMAN USE. FOR RESEARCH ONLY. NOT FOR DIAGNOSTIC OR THERAPEUTIC USE.



**Cell Sciences®**  
65 Parker Street  
Unit 11  
Newburyport, MA 01950

Toll Free: 888-769-1246  
Phone: 978-572-1070  
Fax: 978-992-0298

E-mail: [info@cellsciences.com](mailto:info@cellsciences.com)  
Website: [www.cellsciences.com](http://www.cellsciences.com)