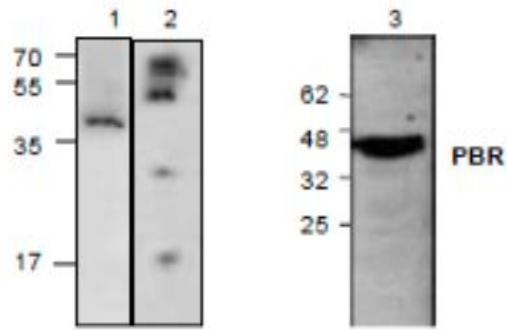


Rabbit Anti-Mouse PBR Affinity Purified pAb

| | | | |
|---------------------------------|--|------------------|--------|
| Catalog No. | CPP140 | Quantity: | 100 µg |
| Alternate Names: | Translocator protein, TSPO, BZRP, DBI, IBP, MBR, PKBS, PTBR | | |
| Description: | PBR (Peripheral-type Benzodiazepine Receptor) is a ubiquitous protein (18 kDa) found in most steroidogenic tissues. It is located primarily in the outer mitochondrial membrane of steroid-producing tissues and is found in association with a 34 kDa voltage-dependent anion channel protein (VDAC). PBR is involved in the regulation of cholesterol transport from the outer to the inner mitochondrial membrane. It is thought to be part of the mitochondrial permeability transition pore (PT) and to be involved in apoptosis. | | |
| Concentration: | 0.5 mg/ml | | |
| Host: | Rabbit | | |
| Immunogen: | Synthetic peptide surrounding amino acid 81 of mouse PBR. | | |
| Isotype: | IgG | | |
| Formulation: | 100 µg (0.5 mg/ml) affinity purified rabbit anti-PBR polyclonal antibody in phosphate buffered saline (PBS), pH 7.2. | | |
| Purification: | Affinity purified. | | |
| Cross-Reactivity: | Human, mouse, and rat | | |
| Applications: | Western Blot Immunohistochemistry | | |
| Application Notes: | For Western Blot, use a working dilution of 0.5-4 µg/ml. For Immunohistochemistry, use a working dilution of 10-20 µg/ml. Blocking peptide (Cat. No. CPP140BP) is available separately. The optimal concentration should be determined by the user for each specific application. | | |
| Storage & Stability: | Store at -20°C or in working aliquots at -80°C for long term storage. Avoid repeated freeze-thaw cycles. | | |

Western blot analysis of PBR expression using: Lane 1: Jurkat cell lysate
Lane 2: Recombinant PBR
Lane 3: Rat kidney tissue lysate





NOT FOR HUMAN USE. FOR RESEARCH ONLY. NOT FOR DIAGNOSTIC OR THERAPEUTIC USE.

