

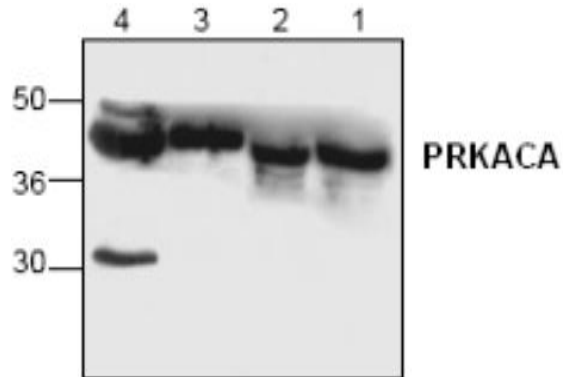
PRKACA

Rabbit Anti-Human Protein Kinase cAMP-Dependent Catalytic alpha Affinity Purified pAb

Catalog No.	CPP141	Quantity:	100 µg
Alternate Names:	PKACA		
Gene ID:	5566		
Description:	Rabbit Anti-Human PRKACA Affinity Purified polyclonal antibody. PRKACA is a 40 kDa protein kinase that phosphorylates serine or threonine residues in target proteins in response to elevated levels of cAMP. It has been suggested that the complex structure of PRKACA may be necessary for it to accomplish such diverse functions.		
Concentration:	0.5 mg/ml		
Specificity:	Recognizes the 40 kDa PRKACA on SDS-PAGE immunoblots.		
Host:	Rabbit		
Immunogen:	Synthetic peptide surrounding amino acid 11 of PRKACA		
Formulation:	Liquid in PBS, pH 7.2 + 30% glycerol + 0.5% BSA + 0.01% thimerosal. Precaution: Thimerosal is a poisonous and hazardous substance which should be handled by trained staff only.		
Purification:	Biospecific affinity chromatography		
Cross-Reactivity:	Reacts with human, mouse, rat, cow, sheep, and pig.		
Applications:	Western Blot Immunoprecipitation		
Application Notes:	For Western Blot, use a working dilution of 0.5-4 µg/ml. Jurkat cell lysate can be used as a positive control. For Immunoprecipitation, use a working dilution of 20-30 µg/ml. Blocking Peptide (Cat. No. CPP141BP) is available separately. The optimal concentration should be determined by the user for each specific application.		
Storage & Stability:	Store at -20°C or in working aliquots at -80°C for long term storage. Avoid repeated freeze-thaw cycles.		



Western Blot analysis of PRKACA expresion
Lanes 1 & 2: Jurkat cell lysate; Lane 3: Mouse small intestine lysate; Lane 4: Rat kidney lysate



NOT FOR HUMAN USE. FOR RESEARCH ONLY. NOT FOR DIAGNOSTIC OR THERAPEUTIC USE.