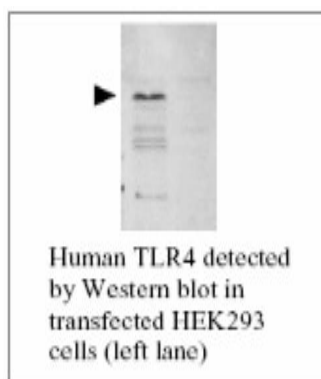


## TLR-4, Human pAb

<b>Catalog No.</b>	CPT200	<b>Quantity:</b>	200 µg
<b>Name:</b>	Toll-like receptor 4(TLR4)		
<b>Description:</b>	This antibody detects TLR4.		
<b>Specificity:</b>	Human TLR-4		
<b>Host:</b>	Rabbit		
<b>Immunogen:</b>	Recombinant human TLR4 (a.a. 6-169)		
<b>Isotype:</b>	IgG		
<b>Formulation:</b>	Lyophilized with 0.1% sodium azide. Precaution: Sodium azide is a poisonous and hazardous substance which should be handled by trained staff only.		
<b>Purification:</b>	Protein A purified		
<b>Reconstitution:</b>	<b>Centrifuge vial prior to opening.</b> Reconstitute to 1 mg/ml by adding 200 µl distilled water.		
<b>Cross-Reactivity:</b>	Cross-reactivity with other TLRs has not been determined.		
<b>Storage &amp; Stability:</b>	2-4°C for short term storage or -20°C in small aliquots for long term storage. <b>Avoid repeated freeze-thaw cycles.</b>		
<b>Applications:</b>	Western blot: 1:3,000 Flow cytometry: analysis of cell-surface expression of TLR4 The optimal concentration should be determined by the user for each specific application.		



NOT FOR HUMAN USE. FOR RESEARCH ONLY. NOT FOR DIAGNOSTIC OR THERAPEUTIC USE.