

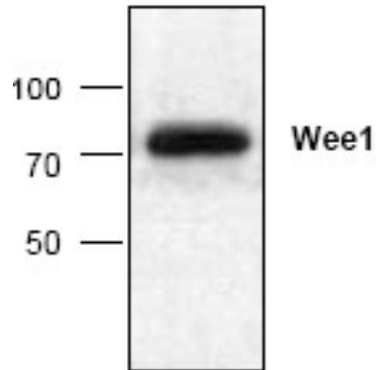
WEE1

Rabbit Anti-Human WEE1 Affinity Purified pAb

Catalog No.	CPW106	Quantity:	100 µg
Alternate Names:	Wee1A, WEE1hu, Wee1A kinase		
Description:	Rabbit Anti-Human WEE1 Affinity Purified polyclonal antibody. WEE1 is a nuclear tyrosine protein kinase. The protein plays a role in suppressing eukaryotes' entry into mitosis by inactivating cdc2 kinase by inhibiting tyrosine phosphorylation. The predicted molecular weight of the kinase is 72 kDa. The kinase possesses tyrosine kinase activity, but structurally belongs to the serine/threonine protein kinase family.		
Concentration:	0.5 mg/ml		
Gene ID:	22390		
Specificity:	Recognizes human WEE1.		
Host:	Rabbit		
Immunogen:	Synthetic peptide mapping to the C-terminus of human Wee1.		
Isotype:	IgG		
Formulation:	100 µg (0.5 mg/ml) affinity-purified rabbit anti-Wee1 polyclonal antibody in phosphate buffered saline (PBS), pH 7.2, containing 30% glycerol, 0.5% BSA, and 0.01% thiomersal. Precaution: Thiomersal is a poisonous and hazardous substance which should be handled by trained staff only.		
Purification:	Affinity purified.		
Species Reactivity:	Human, mouse and rat		
Cross-Reactivity:	Cross reacts with mouse and rat WEE1.		
Applications:	Western Blot Immunoprecipitation Immunohistochemistry		
Application Notes:	For Western Blot, use a working dilution of 0.5-4 µg/ml. For Immunoprecipitation, use a working dilution of 5-10 µg/ml. Mouse small intestine tissue lysate can be used as a positive control. Blocking Peptide (Cat. No. CPW106BP) is available separately. The optimal concentration should be determined by the user for each specific application.		
Storage & Stability:	Store at -20°C or in working aliquots at -80°C for long term storage. Avoid repeated freeze-thaw cycles.		

Western Blot analysis of WEE1 expression in mouse small intestine tissue lysate





NOT FOR HUMAN USE. FOR RESEARCH ONLY. NOT FOR DIAGNOSTIC OR THERAPEUTIC USE.