

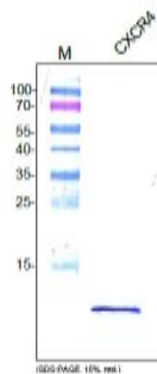
## CXCR4

### Rabbit Anti-Human CXCR4 pAb

<b>Catalog No.</b>	CS411A CS411B	<b>Quantity:</b>	100 µg 200 µg
<b>Alternate Names:</b>	C-X-C chemokine receptor type 4, Stromal cell-derived factor 1 receptor, CD184, D2S201E, FB22, HM89, HSY3RR, LAP3, LCR1, LESTR, NPY3R, NPYR, NPYRL, NPYY3R, WHIM		
<b>Description:</b>	<p>CXCR4 is a 7-transmembrane G-protein chemokine receptor that allows for migration of hematopoietic cells from the bone marrow to the peripheral lymph nodes. Research has shown CXCR4 to be implicated in the invasion and metastasis of several cancers, including carcinoma of the breast. CXCL12 is the ligand for CXCR4 and is highly expressed in areas common for breast cancer metastasis, including the axillary lymph nodes. Axillary lymph nodes positive for breast carcinoma have been an important component of breast cancer diagnosis, treatment, and subsequent research.</p> <p>Rabbit anti-Human CXCR4 polyclonal antibody is produced from the sera of rabbits immunized with highly pure recombinant human CXCR4 fusion protein [N-terminal and extracellular loops] produced in <i>E. coli</i>.</p>		
<b>Gene ID:</b>	7852		
<b>Protein Accession No.:</b>	NP_001008540.1		
<b>Host:</b>	Rabbit		
<b>Immunogen:</b>	Recombinant human CXCR4 fusion protein [N-terminal and extracellular loops]		
<b>Isotype:</b>	IgG		
<b>Formulation:</b>	Lyophilized from a solution of PBS		
<b>Purification:</b>	Protein A purified		
<b>Reconstitution:</b>	<b>Centrifuge vial prior to opening.</b> Reconstitute in sterile water to a concentration of 0.1 -1.0 mg/ml.		
<b>Applications:</b>	<p>ELISA: use at 2-5 µg/ml</p> <p>Western Blot: use at 1-5 µg/ml</p> <p>The optimal concentration should be determined by the user for each specific application.</p>		
<b>Storage &amp; Stability:</b>	<p>The lyophilized antibody is stable at room temperature for up to 1 month, but best stored below 4°C. After reconstitution, the antibody is stable for at least two weeks at 2-4°C. Frozen aliquots are stable for at least 6 months when stored at -20°C to -80°C. <b>Avoid repeated freeze-thaw cycles.</b></p>		



Western analysis with recombinant human CXCR4 fusion protein produced in *E. coli*.



**NOT FOR HUMAN USE. FOR RESEARCH ONLY. NOT FOR DIAGNOSTIC OR THERAPEUTIC USE.**



**Cell Sciences®**  
480 Neponset Street  
Bldg 12A  
Canton, MA 02021

Toll Free: 888-769-1246  
Phone: 781-828-0610  
Fax: 781-828-0542

E-mail: [info@cellsciences.com](mailto:info@cellsciences.com)  
Website: [www.cellsciences.com](http://www.cellsciences.com)