

KDM5D

Rabbit Anti-Human Lysine (K)-Specific Demethylase 5D pAb His

Catalog No.	CS412A CS412B	Quantity:	100 µg 200 µg
Alternate Names:	Lysine-specific demethylase 5D, Histone demethylase JARID1D, Histocompatibility Y antigen, human homolog of selected mouse cDNA on Y, Jumonji/ARID domain-containing protein 1D, HY, HYA, JARID1D, SMCY		
Description:	<p>H-Y antigen is defined as a male histocompatibility antigen that causes rejection of male skin grafts by female recipients of the same inbred strain of rodents. Male-specific, or H-Y antigen(s), are also detected by cytotoxic T cells and antibodies. H-Y antigen appears to be an integral part of the membrane of most male cells. In addition, H-Y antibodies detect a soluble form of H-Y that is secreted by the testis. The gene (Smcy/SMCY) coding for H-Y antigen detected by T cells has been cloned. It is expressed ubiquitously in male mice and humans, and encodes an epitope that triggers a specific T-cell response in vitro. Additional epitopes coded for by different Y-chromosomal genes are probably required in vivo for the rejection of male grafts by female hosts. The molecular nature of H-Y antigen detected by antibodies on most male cells is not yet known. Testis-secreted, soluble H-Y antigen, however, was found to be identical to Müllerian-inhibiting substance (MIS). MIS cross-reacts with H-Y antibodies and identical findings were obtained for soluble H-Y antigen and MIS, i.e., secretion by testicular Sertoli and, to a lesser degree, ovarian cells, binding to a gonad-specific receptor, induction of gonadal sex reversal in vitro and, in cattle, in vivo. H-Y antisera also detect a molecule or molecules associated with the heterogametic sex in non-mammalian vertebrates. Molecular data on this antigen or antigens are not yet available.</p> <p>Rabbit anti-Human SMCY/JARID1D is produced from sera of rabbits pre-immunized with highly pure (>95%) recombinant human SMCY (Leu248-Leu1539) fused to a C-terminal His-tag (6x His) derived from <i>E. coli</i>.</p>		
Gene ID:	8284		
Protein Accession No.:	NP_001140177.1		
Host:	Rabbit		
Immunogen:	Recombinant human SMCY		
Isotype:	IgG		
Formulation:	Lyophilized		
Purification:	Protein A purified		
Reconstitution:	Centrifuge vial prior to opening. Reconstitute in sterile water to a concentration of 0.1 -1.0 mg/ml.		



Applications:

Western Blot: use at 1-5 µg/ml

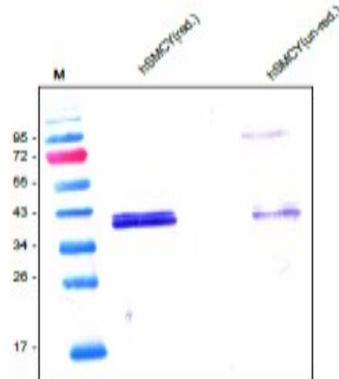
The optimal concentration should be determined by the user for each specific application.

Storage & Stability:

The lyophilized antibody is stable at room temperature for up to 1 month, but best stored below 4°C. After reconstitution, the antibody is stable for at least two weeks at 2-4°C.

Frozen aliquots are stable for at least 6 months when stored at -20°C to -80°C. **Avoid repeated freeze-thaw cycles.**

Western analysis of recombinant human SMCY using an anti-human SMCY polyclonal antibody directed against the C-terminal part of human SMCY (Leu1248-Leu1539)



NOT FOR HUMAN USE. FOR RESEARCH ONLY. NOT FOR DIAGNOSTIC OR THERAPEUTIC USE.

