

## Esm1

### Rabbit Anti-Mouse Endothelial Cell-Specific Molecule 1 pAb

<b>Catalog No.</b>	CS416A	<b>Quantity:</b>	100 µg
	CS416B		200 µg

**Alternate Names:** Endothelial cell-specific molecule-1, endocan

**Description:** Endocan, also known as endothelial cell-specific molecule1 (ESM1), is a secreted cysteine-rich dermatan sulfate (DS) proteoglycan primarily expressed by endothelial cells within the vascular capillary network in kidney and in the alveolar walls of the lung. Endocan expression has also been detected in different epithelia and in adipocytes. The expression of endocan is up-regulated by TNF $\alpha$ , IL1 $\beta$  or lipopolysaccharide and down-regulated by IFN $\gamma$ . The mouse Endocan gene encodes a 184 amino acid (aa) residues precursor protein with a 19 aa hydrophobic signal peptide and a 165 aa mature region with 18 Cysteine residues. The DS chain is covalently attached to serine 137. Endocan has been shown to bind CD11a/CD18 integrin (also known as lymphocyte function-associated antigen1, LFA1) on human lymphocytes, monocytes and Jurkat cells, inhibiting its binding to ICAM1 and reducing LFA1mediated leukocyte activation. Endocan binds via its DS chain to hepatocyte growth factor (HGF) to enhance HGF mitogenic activity. Genetically engineered cells overexpressing Endocan has been shown to induce tumor formation, suggesting that Endocan may be involved in the pathophysiology of tumor growth in vivo. Circulating Endocan can be detected in the serum from healthy subjects.

Rabbit anti-Mouse Endocan polyclonal antibody is produced from sera of rabbits pre-immunized with highly pure (>95%) recombinant mouse Endocan/ESM1 (Trp19-Arg184) derived from *E. coli*.

**Gene ID:** 71690

**Protein Accession No.:** NP\_076101.1

**Host:** Rabbit

**Immunogen:** Recombinant mouse ESM-1

**Isotype:** IgG

**Formulation:** Lyophilized from a solution of 5 mM PBS, pH 7.2

**Purification:** Protein A purified

**Reconstitution:** **Centrifuge vial prior to opening.** Reconstitute in sterile water to a concentration of 0.1 -1.0 mg/ml.

**Applications:** Western Blot: use at 1-5 µg/ml  
The optimal concentration should be determined by the user for each specific application.



**Storage & Stability:**

The lyophilized antibody is stable at room temperature for up to 1 month, but best stored below 4°C. After reconstitution, the antibody is stable for at least two weeks at 2-4°C. Frozen aliquots are stable for at least 6 months when stored at -20°C to -80°C. **Avoid repeated freeze-thaw cycles.**

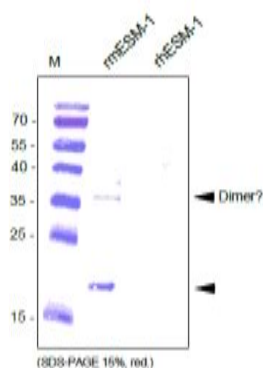
Western Analysis of rabbit anti-mouse Endocan/ESM-1.

Samples were loaded in 15% SDS-polyacrylamide gel under reducing conditions.

Lane 1: MW markers (kDa).

Lane 2: recombinant human ESM-1.

Lane 3: recombinant mouse ESM-1.



**NOT FOR HUMAN USE. FOR RESEARCH ONLY. NOT FOR DIAGNOSTIC OR THERAPEUTIC USE.**



**Cell Sciences®**  
480 Neponset Street  
Bldg 12A  
Canton, MA 02021

Toll Free: 888-769-1246  
Phone: 781-828-0610  
Fax: 781-828-0542

E-mail: [info@cellsciences.com](mailto:info@cellsciences.com)  
Website: [www.cellsciences.com](http://www.cellsciences.com)