

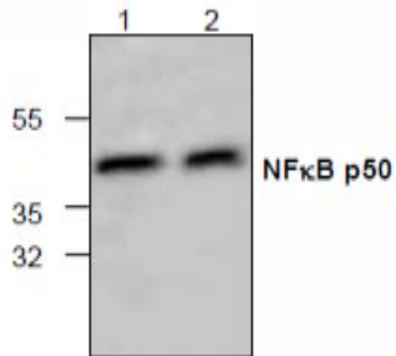
NFKB1

Rabbit Anti-Human NF-kappa B p50 pAb

| | | | |
|---------------------------------|--|------------------|--------|
| Catalog No. | CS536 | Quantity: | 100 µg |
| Alternate Names: | Nuclear factor of kappa light polypeptide gene enhancer in B-cells 1, NFkBp50, NFkB p50, p105, p50, DNA binding factor KBF1 | | |
| Description: | <p>Rabbit Anti-Human NF-kappa B p50 polyclonal antibody.</p> <p>Nuclear factor kappa B (NFkB) was identified as a sequence specific transcriptional activator that binds to the intronic enhancer of kappa light chain gene in B lymphocytes. NFkB is a heterodimer that consists of a 50 kDa DNA binding subunit (p50) and a 65 kDa transactivation subunit (p65/RelA). Both of these subunits exhibit sequence homology to the protooncogene c-Rel. The p50 has an isoform called p49/p52, and both proteins are derived from the amino-terminal of precursor protein p105 and p100. The p50/p65 heterodimer remains in the cytosol in an inactive form as a complex with its inhibitor, IκB. Upon stimulation of cells by a wide variety of stimuli such as lipopolysaccharide (LPS), pro-inflammatory cytokines (IL-1 and TNF, etc.), and viral infection, IκB is phosphorylated and degraded by proteasome. The active NFkB heterodimer is translocated into the nucleus and induces gene expression.</p> | | |
| Concentration: | 0.5 mg/ml | | |
| Gene ID: | 4790 | | |
| Immunogen: | Synthetic peptide corresponding to the N-terminus of human NFkB p50 | | |
| Isotype: | IgG | | |
| Formulation: | Colorless liquid containing PBS, pH 7.2, + 30% glycerol + 0.5% BSA + 0.01% thimerosal. Precaution: thimerosal is a poisonous and hazardous substance which should be handled by trained staff only. | | |
| Purification: | Affinity purified | | |
| Handling: | The antibody solution should be gently mixed before use. | | |
| Cross-Reactivity: | Mouse and Rat | | |
| Applications: | Western blot | | |
| Application Notes: | Western blot: 0.5-4 µg/ml. The optimal concentration should be determined by the user for each specific application. Blocking peptide (Cat.# CS537) is available separately. | | |
| Storage & Stability: | Store at -20°C. For long-term storage, aliquot and freeze at -80°C. Avoid repeated freeze-thaw cycles. | | |



p50 in lysate from 3T3 cells
(Lane 1) and rat kidney (Lane 2)



NOT FOR HUMAN USE. FOR RESEARCH ONLY. NOT FOR DIAGNOSTIC OR THERAPEUTIC USE.



Cell Sciences®
480 Neponset Street
Bldg 12A
Canton, MA 02021

Toll Free: 888-769-1246
Phone: 781-828-0610
Fax: 781-828-0542

E-mail: info@cellsciences.com
Website: www.cellsciences.com