

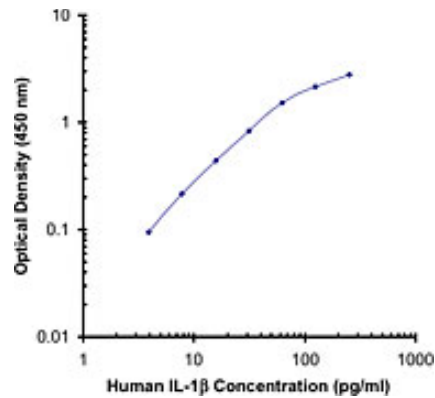
IL1B

Mouse Anti-Human IL-1 beta Clone JK1B-2 Biotin mAb

| | | | |
|---------------------------|---|------------------|-----------------|
| Catalog No. | CSI10144 CSI10145 | Quantity: | 50 µg 0.5 mg |
| Alternate Names: | Interleukin-1β, Catabolin, Hematopoietin-1 (H1), IFNβ-inducing factor, Interleukin-β, Osteoclast activating factor (OAF)(il-1b,il1b) | | |
| Description: | IL-1 refers to two proteins, IL-1α and IL-1β which are the products of distinct genes, but which are recognized by the same cell surface receptors. IL-1β is a potent immuno-modulator which mediates a wide range of immune and inflammatory responses including the activation of B and T cells. The JK1B-2 antibody reacts with human interleukin-1β (IL-1β) and baboon IL-1β. The JK1B-2 antibody does not recognize mouse IL-1β or human IL-1α or other cytokines. The JK1B-2 antibody can neutralize the bioactivity of natural or recombinant IL-1β. | | |
| Concentration: | 0.5 mg/ml | | |
| Gene ID: | 3553 | | |
| Host: | Mouse | | |
| Immunogen: | Recombinant human IL-1 beta | | |
| Isotype: | Mouse IgG2b, κ | | |
| Clone: | JK1B-1 | | |
| Bioactivity: | Stimulates T cells, B cells, proliferation/activation of NK cells, fibroblasts, thymocytes, glioblastoma cells, astroglia, microglia | | |
| Formulation: | Phosphate-buffered solution, pH 7.2, containing 0.09% sodium azide. Precaution: Sodium azide is a poisonous and hazardous substance which should be handled by trained staff only. | | |
| Purification: | The antibody was purified by affinity chromatography, and conjugated with biotin under optimal conditions. The solution is free of unconjugated biotin. | | |
| Reactivity: | Human | | |
| Applications: | ELISA Capture | | |
| Recommended Usage: | Each lot of this antibody is quality control tested by ELISA assay. For use as an ELISA detection antibody, a concentration range of 1-4 µg/ml is recommended. To obtain a linear standard curve, serial dilutions of human IL-1β protein ranging from 250 to 2 pg/ml are recommended for each ELISA plate. For use as an ELISPOT detection antibody, a concentration range of 2-8 µg/ml is recommended. It is recommended that the reagent be titrated for optimal performance for each application. | | |



Storage & Stability: The antibody solution should be stored undiluted at 2-4°C. **Do not freeze.**



NOT FOR HUMAN USE. FOR RESEARCH ONLY. NOT FOR DIAGNOSTIC OR THERAPEUTIC USE.



Cell Sciences®
480 Neponset Street
Bldg 12A
Canton, MA 02021

Toll Free: 888-769-1246
Phone: 781-828-0610
Fax: 781-828-0542

E-mail: info@cellsciences.com
Website: www.cellsciences.com