

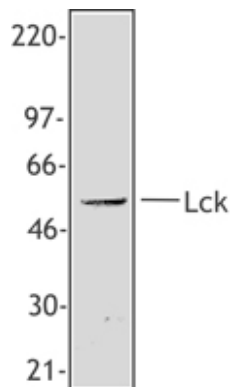
## LCK

### Rabbit Anti-Human Lymphocyte-specific Protein Tyrosine Kinase Affinity Purified pAb

<b>Catalog No.</b>	CSI10169 CSI10170	<b>Quantity:</b>	50 µl 200 µl
<b>Alternate Names:</b>	Proto-oncogene tyrosine kinase lck, p56-Lck, T-cell specific protein tyrosine kinase		
<b>Description:</b>	Lck is a 56 kD tyrosine protein kinase and a member of the src subfamily that contains both an SH2 and SH3 domain. Alternatively spliced isoforms of Lck have been reported. Lck is a cytoplasmic protein bound to CD4 and CD8 in T lymphocytes that participates in antigen-induced T cell activation through phosphorylation of the T cell receptor zeta chain. Lck is activated upon T cell receptor engagement and is involved in the onset of cell cycle progression induced by interleukin-2. Phosphorylation by Csk downregulates the activity of Lck. In addition to CD4 and CD8, Lck has been reported to interact with PI3K through its SH3 domain and tyrosine phosphorylated KHDRBS1/p70 through its SH2 domain. In addition, Lck has been shown to associate with the SAP transmembrane tyrosine phosphatase. The Poly6045 antibody recognizes the N-terminal region of human Lck and has been shown to be useful for Western blotting.		
<b>Gene ID:</b>	3932		
<b>Host:</b>	Rabbit		
<b>Immunogen:</b>	Recombinant (partial), N-terminal		
<b>Isotype:</b>	Rabbit Polyclonal		
<b>Clone:</b>	Poly6045		
<b>Formulation:</b>	This antibody is provided in phosphate-buffered solution, pH 7.2, containing 0.09% sodium azide and 50% glycerol. Precaution: Sodium azide is a poisonous and hazardous substance which should be handled by trained staff only.		
<b>Purification:</b>	The antibody was purified by antigen-affinity chromatography.		
<b>Reactivity:</b>	Human		
<b>Applications:</b>	Western Blot		
<b>Recommended Usage:</b>	Each lot of this antibody is quality control tested by Western blotting. Western blotting, suggested working dilution(s): Use 10 µl per 5 ml antibody dilution buffer for each mini-gel. It is recommended that the reagent be titrated for optimal performance for each application.		
<b>Storage &amp; Stability:</b>	Upon receipt, store frozen at -20°C. <b>Avoid repeated freeze-thaw cycles.</b>		



MOLT4 cell lysate was resolved by electrophoresis, transferred to nitrocellulose and probed with rabbit anti-Lck antibody. Proteins were visualized using a donkey anti-rabbit secondary conjugated to HRP and a chemiluminescence detection system.



NOT FOR HUMAN USE. FOR RESEARCH ONLY. NOT FOR DIAGNOSTIC OR THERAPEUTIC USE.



**Cell Sciences®**  
480 Neponset Street  
Bldg 12A  
Canton, MA 02021

Toll Free: 888-769-1246  
Phone: 781-828-0610  
Fax: 781-828-0542

E-mail: [info@cellsciences.com](mailto:info@cellsciences.com)  
Website: [www.cellsciences.com](http://www.cellsciences.com)