

MAP2K6

Rabbit Anti-Human Mitogen-Activated Protein Kinase 6 Clone Poly6047 Affinity Purified pAb

Catalog No.	CSI12011 CSI12012	Quantity:	50 µl 200 µl
Alternate Names:	Mitogen-activated protein kinase 6, MAPK/ERK kinase 6, MEK6, MAP kinase, kinase 6		
Description:	MKK6 (Mitogen-activated protein kinase 6, MAPK/ERK kinase 6) is a 37 kD serine/threonine kinase family, MAP kinase subfamily. Two isoforms of MKK6 have been reported; MKK6 (only heart), MKK6B muscle, heart, liver, and pancreas. MKK6 phosphorylates and activates MAP kinase p38 and stress-activated kinase JNK. MKK6 is activated by UV, anisomycin, and osmotic shock. MKK6 is phosphorylated (Ser 207/Thr 211). MKK6 has been shown to interact with ASK-1 kinase. The Poly6047 antibody recognizes the N-terminal region of both human and mouse MKK6 and has been shown to be useful for Western blotting.		
Modification:	Phosphorylation (Ser 207/Thr 211).		
Gene ID:	5608		
Regulation:	Activated by UV, anisomycin, osmotic shock.		
Distribution:	MKK6 (only heart), MKK6B muscle, heart, liver, pancreas.		
Host:	Rabbit		
Immunogen:	Recombinant (partial) , N-terminal		
Isotype:	Rabbit IgG		
Clone:	Poly6047		
Structure:	Serine/Threonine kinase family, MAP kinase subfamily; 37 kD.		
Formulation:	This antibody is provided in phosphate-buffered solution, pH 7.2, containing 0.09% sodium azide and 50% glycerol. Precaution: Sodium azide is a poisonous and hazardous substance which should be handled by trained staff only.		
Purification:	The antibody was purified by Protein A affinity chromatography.		
Function:	Phosphorylates, activates MAP kinase p38 and stress-activated kinase JNK		
Reactivity:	Mouse, Human		

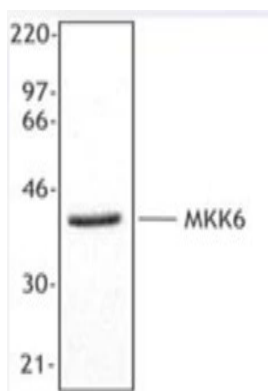


Applications: Western Blot

Recommended Usage: Each lot of this antibody is quality control tested by Western blotting. Western blotting, suggested working dilution(s): Use 10 µl per 5 ml antibody dilution buffer for each mini-gel. It is recommended that the reagent be titrated for optimal performance for each application.

Storage & Stability: Upon receipt, store frozen at -20° C. **Avoid repeated freeze-thaw cycles.**

Jurkat cell extract was resolved by electrophoresis, transferred to nitrocellulose, and probed with rabbit anti-MKK6 antibody. Proteins were visualized using a donkey anti-rabbit secondary conjugated to HRP and a chemiluminescence detection system.



NOT FOR HUMAN USE. FOR RESEARCH ONLY. NOT FOR DIAGNOSTIC OR THERAPEUTIC USE.



Cell Sciences®
480 Neponset Street
Bldg 12A
Canton, MA 02021

Toll Free: 888-769-1246
Phone: 781-828-0610
Fax: 781-828-0542

E-mail: info@cellsciences.com
Website: www.cellsciences.com