

## IFNG

### Mouse Anti-Human IFN-gamma Clone 4S.B3 Biotin mAb

<b>Catalog No.</b>	CSI12355 CSI12356	<b>Quantity:</b>	50 µg 0.5 mg
<b>Alternate Names:</b>	Interferon-γ, Immune interferon, Type II interferon, T cell interferon, Macrophage-activating factor (MAF), IFN-g, IFN-gamma		
<b>Description:</b>	Interferon-γ is a potent multifunctional cytokine which is secreted primarily by activated NK cells and T cells. Originally characterized based on anti-viral activities, IFN-γ also exerts anti-proliferative, immunoregulatory, and proinflammatory activities. IFN-γ can upregulate MHC class I and II antigen expression by antigen-presenting cells.		
<b>Concentration:</b>	0.5 mg/ml		
<b>Gene ID:</b>	3458		
<b>Structure:</b>	Cytokine; dimer; 20-25 kD (Mammalian).		
<b>Regulation:</b>	Upregulated by IL-2, FGF-basic, EGF; downregulated by vitamin D3 or DMN; labile at pH2.		
<b>Host:</b>	Mouse		
<b>Immunogen:</b>	Partially purified, native human IFN-γ		
<b>Isotype:</b>	Mouse IgG1, κ		
<b>Clone:</b>	4S.B3		
<b>Bioactivity:</b>	Antiviral/antiparasitic activities; inhibits proliferation; enhances MHC class I and II expression on APC.		
<b>Formulation:</b>	Phosphate-buffered solution, pH 7.2, containing 0.09% sodium azide. <b>Precaution:</b> Sodium azide is a poisonous and hazardous substance which should be handled by trained staff only.		
<b>Purification:</b>	The antibody was purified by affinity chromatography, and conjugated with biotin under optimal conditions. The solution is free of unconjugated biotin.		
<b>Receptors:</b>	N-γRα (CDw119) dimerized with IFN-γRβ (AF-1)		
<b>Reactivity:</b>	Human, <b>Cross-Reactivity:</b> Chimpanzee, Baboon, Cynomolgus, Rhesus		
<b>Applications:</b>	ELISA Detection, ELISPOT Detection, ICFC		
<b>Recommended Usage:</b>	Each lot of this antibody is quality control tested by ELISA analysis. For ELISA detection applications, a concentration range of 0.5-2.0 µg/ml is recommended. To obtain a linear standard curve, serial dilutions of IFN-γ recombinant protein ranging from 1000 to 8 pg/ml		

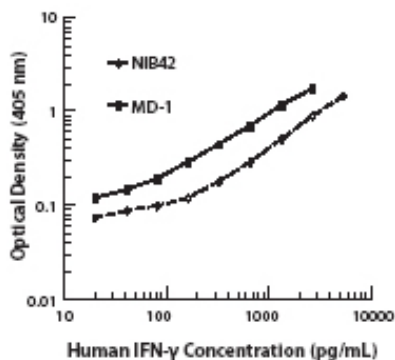


are recommended for each ELISA plate. For use as an ELISPOT detection antibody, a concentration range of 1-4 µg/ml is recommended. For immunofluorescent staining, the suggested use of this reagent is  $\leq 0.5$  µg per  $10^6$  cells in 100 µl volume. It is recommended that the reagent be titrated for optimal performance for each application.

**Storage & Stability:** The antibody solution should be stored undiluted at 4 °C. **Do not freeze.**

**Cellular Sources:** CD8+ and CD4+ T cells, NK cells

**Cellular Targets:** T cells, B cells, macrophages, NK cells, endothelial cells, fibroblasts.



NOT FOR HUMAN USE. FOR RESEARCH ONLY. NOT FOR DIAGNOSTIC OR THERAPEUTIC USE.

