

ITGB1

Rabbit Anti-Human Integrin beta 1/CD29 Clone Poly6004 Affinity Purified pAb

Catalog No.	CSI12386 CSI12387	Quantity:	50 µl 200 µl
Alternate Names:	Integrin VLA-4 beta chain, Fibronectin receptor beta chain, CD29		
Description:	Integrin β1 also known as integrin VLA-4 beta chain, fibronectin receptor beta chain, and CD29) is a 90 kD integrin beta chain containing VWFA-like domains. Five isoforms have been reported (β1A-1D, 1C-2). This Type I membrane protein is a subunit of the heterodimeric receptor for laminin, fibronectin, collagen, fibrinogen, VCAM1, cytotactin, osteopontin, epiligrin, thrombospondin, and vitronectin. Signal transduction through the integrins affects embryogenesis, hemostasis, tissue repair, immune response, and metastatic spread of tumor cells. Integrin β1 can be upregulated by LPS with soluble CD14 and TNF-α; downregulation of integrin β1 by α-melanocyte stimulating hormone and progesterone. Integrin β1 is modified by phosphorylation and glycosylation. Integrin β1 partners with integrin alpha subunits αv, and α1 through α1.1. The Poly6004 antibody recognizes the N-terminal region of human integrin β1 and has been shown to be useful for Western blotting.		
Concentration:	0.5 mg/ml		
Gene ID:	3688		
Structure:	Integrin beta chain, VWFA-like domains. Five isoforms (β1A-1D, 1C-2), 90 kD.		
Distribution:	Type I membrane protein.		
Function:	Subunit of heterodimeric receptor for laminin, fibronectin, collagen, fibrinogen, VCAM1, cytotactin, osteopontin, epiligrin, thrombospondin, vitronectin; signal transduction affects embryogenesis, hemostasis, tissue repair, immune response.		
Immunogen:	Recombinant (partial), N-terminal		
Isotype:	Rabbit IgG		
Clone:	Poly6004		
Regulation:	Upregulated by LPS with soluble CD14, TNF-α. Downregulated by α-melanocyte stimulating hormone, progesterone.		
Formulation:	This antibody is provided in phosphate-buffered solution, pH 7.2, containing 0.09% sodium azide and 50% glycerol. Precaution: Sodium azide is a poisonous and hazardous substance which should be handled by trained staff only.		
Purification:	The antibody was purified by antigen-affinity chromatography.		



Modification: Phosphorylation, Glycosylation.

Reactivity: Human

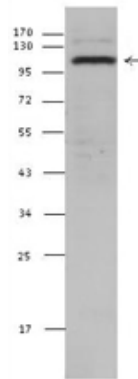
Applications: Western Blot

Recommended Usage: Each lot of this antibody is quality control tested by Western blotting. Western blotting, suggested working dilution(s): Use 10 μ l per 5 ml antibody dilution buffer for each mini-gel. It is recommended that the reagent be titrated for optimal performance for each application.

Storage & Stability: Upon receipt, store frozen at -20° C.

Interaction: Partners with integrin alpha subunits α_v , α_1 through α_{11}

HeLa cell extracts were resolved by electrophoresis, transferred to nitrocellulose, and probed with purified polyclonal anti-integrin $\beta 1$ antibody (clone Poly6004). Proteins were visualized using a donkey anti-rabbit-IgG secondary conjugated to HRP and chemiluminescence detection.



NOT FOR HUMAN USE. FOR RESEARCH ONLY. NOT FOR DIAGNOSTIC OR THERAPEUTIC USE.