

## NIN

### Rabbit Anti-Human Ninein (GSK3B Interacting Protein) Clone Poly6028 Affinity Purified pAb

<b>Catalog No.</b>	CSI12412 CSI12413	<b>Quantity:</b>	50 µl 200 µl
<b>Alternate Names:</b>	GSK3β-interacting protein, Ninein centrosomal protein		
<b>Description:</b>	Ninein (also known as GSK3β-interacting protein and ninein centrosomal protein) is a chromosome segregation ATPase with 5 reported isoforms, (molecular weights ranging from 236 to 246 kD). Ninein is localized at the centrosome and is thought to position and anchor microtubules minus-ends. Ninein is important for centrosomal function in epithelial cells. This protein is modified by phosphorylation. Ninein has also been shown to interact with CEP250/c-Nap1, CEP110, γ-tubulin, centrin, GSK3β, AIK, and PKA. The Poly6028 antibody recognizes the N-terminal region of human ninein and has been shown to be useful for Western blotting.		
<b>Concentration:</b>	0.5 mg/ml		
<b>Gene ID:</b>	51199		
<b>Structure:</b>	Chromosome segregation ATPases; 5 isoforms, 236/246/241/244/243 kD.		
<b>Distribution:</b>	Centrosomal		
<b>Host:</b>	Rabbit		
<b>Immunogen:</b>	Recombinant (partial), N-terminal		
<b>Isotype:</b>	IgG		
<b>Clone:</b>	Poly6028		
<b>Function:</b>	Positions and anchors microtubules minus-ends. Important for centrosomal function in epithelial cells.		
<b>Formulation:</b>	This antibody is provided in phosphate-buffered solution, pH 7.2, containing 0.09% sodium azide and 50% glycerol. <b>Precaution:</b> Sodium azide is a poisonous and hazardous substance which should be handled by trained staff only.		
<b>Purification:</b>	The antibody was purified by antigen-affinity chromatography.		
<b>Modification:</b>	Phosphorylation		
<b>Reactivity:</b>	Human		
<b>Applications:</b>	Western Blot		

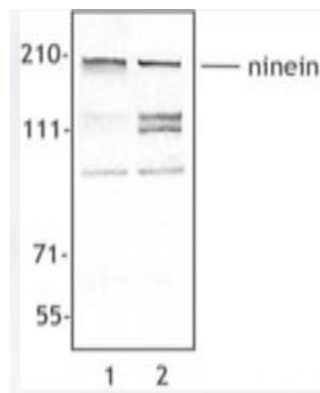


**Recommended Usage:** Each lot of this antibody is quality control tested by Western blotting. Western blotting, suggested working dilution(s): Use 10 µl per 5 ml antibody dilution buffer for each mini-gel. It is recommended that the reagent be titrated for optimal performance for each application.

**Storage & Stability:** Upon receipt, store frozen at -20° C.

**Interaction:** CEP250/c-Nap1, CEP110, γ-tubulin, centrin, GSK3β, AIK, PKA

MCF7 (Lane 1) and MOLT-4 (Lane 2) cell extract was resolved by electrophoresis, transferred to nitrocellulose and probed with rabbit anti-ninein antibody. Proteins were visualized using a donkey anti-rabbit secondary conjugated to HRP and a chemiluminescence detection system. In hematopoietic cells (such as MOLT-4), two additional bands with apparent molecular weights of 110 and 130 kD are observed.



**NOT FOR HUMAN USE. FOR RESEARCH ONLY. NOT FOR DIAGNOSTIC OR THERAPEUTIC USE.**