

MCL1

Rabbit Anti-Mouse Myeloid Cell Leukemia sequence 1 (BCL2-related) Clone Poly6136 pAb

Catalog No.	CSI14266 CSI14267	Quantity:	50 µl 200 µl
Alternate Names:	TM, EAT, MCL1L, MCL1S, Mcl-1, BCL2L3, MCL1-ES, bcl2-L-3, mcl1/EAT, Myeloid cell leukemia-1		
Description:	Mcl-1 (myeloid cell leukemia-1) is a 37 kD Bcl-2 related protein found in mitochondrial and non-mitochondrial membranes that dimerizes with Bax. Mcl-1 has been shown to act as a survival factor for hematopoietic cells and contribute to the STAT-dependent protection of neutrophils against apoptosis. Mcl-1 is increased by PMA, GM-CSF, M-CSF, IL-1β, IL-3, and IL-6 in hematopoietic cells. This protein is decreased following growth factor withdrawal. Mcl-1 is modified by JNK phosphorylation. The Poly6136 antibody has been shown to recognize mouse Mcl-1 and has been shown to be useful for Western blotting.		
Concentration:	0.5 mg/ml		
Gene ID:	4170		
Structure:	Bcl-2 related protein; 37kD.		
Distribution:	Mitochondrial, nonmitochondrial membranes.		
Host:	Rabbit		
Immunogen:	Recombinant (partial)		
Isotype:	IgG		
Clone:	Poly6136		
Function:	Survival factor for hematopoietic cells, contributes to STAT-dependent protection of neutrophil apoptosis.		
Formulation:	This antibody is provided in phosphate-buffered solution, pH 7.2, containing 0.09% sodium azide and 50% glycerol. Precaution: Sodium azide is a poisonous and hazardous substance which should be handled by trained staff only.		
Purification:	The antibody was purified by antigen-affinity chromatography.		
Regulation:	Increased by PMA, GM-CSF, M-CSF, IL-1β, IL-3, and IL-6 in hematopoietic cells. Decreased after growth factor withdrawal.		
Reactivity:	Mouse, Human		



Applications: Western Blot

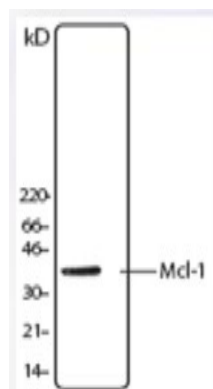
Recommended Usage: Each lot of this antibody is quality control tested by Western blotting. Western blotting, suggested working dilution(s): Use 10 µl per 5 ml antibody dilution buffer for each mini-gel. It is recommended that the reagent be titrated for optimal performance for each application.

Storage & Stability: Upon receipt, store frozen at -20° C

Modification: Phosphorylation by JNK

Interaction: Dimerizes with Bax

A20 cell lysate was resolved by electrophoresis, transferred to nitrocellulose and probed with rabbit anti-Mcl-1 polyclonal antibody. Proteins were visualized using donkey anti-rabbit secondary antibody conjugated to HRP and a chemiluminescence detection system.



NOT FOR HUMAN USE. FOR RESEARCH ONLY. NOT FOR DIAGNOSTIC OR THERAPEUTIC USE.



Cell Sciences®
480 Neponset Street
Bldg 12A
Canton, MA 02021

Toll Free: 888-769-1246
Phone: 781-828-0610
Fax: 781-828-0542

E-mail: info@cellsciences.com
Website: www.cellsciences.com