

## TUBG1

### Mouse Anti-Human Tubulin Gamma Clone 14C11 mAb

<b>Catalog No.</b>	CSI14316 CSI14317	<b>Quantity:</b>	25 µg 100 µg
<b>Alternate Names:</b>	GCP-1, TUBG, TUBGCP1, gamma-tubulin complex component 1, tubulin, gamma polypeptide		
<b>Description:</b>	γ-tubulin is a 51 kD member of the tubulin superfamily and is conserved between yeast and mammals. This cytoskeletal protein is highly expressed in centrosomes and is thought to be involved in cytoskeletal organization and mitosis. γ-tubulin is expressed at highest levels during prophase to metaphase and can be modified by phosphorylation. This protein has been shown to interact with α-tubulin, paxillin, and RAC GTPase activated protein 1.		
<b>Concentration:</b>	0.5 mg/ml		
<b>Gene ID:</b>	7283		
<b>Structure:</b>	Tubulin superfamily, highly conserved between yeast and mammals. Predicted molecular weight approximately 51 kD.		
<b>Distribution:</b>	Cytoskeletal protein, high expressed in centrosomes.		
<b>Host:</b>	Mouse		
<b>Immunogen:</b>	Peptide-KLH		
<b>Isotype:</b>	IgG2b, κ		
<b>Clone:</b>	14C11		
<b>Function:</b>	Cytoskeletal organization, mitosis.		
<b>Formulation:</b>	This antibody is provided in phosphate-buffered solution, pH 7.2, containing 0.09% sodium azide at 0.5 mg/ml. <b>Precaution:</b> Sodium azide is a poisonous and hazardous substance which should be handled by trained staff only.		
<b>Purification:</b>	The antibody was purified by protein-G affinity chromatography.		
<b>Regulation:</b>	Expressed at highest levels during prophase to metaphase.		
<b>Reactivity:</b>	Human, Mouse, Rat		
<b>Applications:</b>	WB, IF		
<b>Recommended Usage:</b>	Each lot of this antibody is quality control tested by Western blotting. Western blotting, suggested working dilution(s): Use 5 µg per 5 ml antibody dilution buffer for each mini-gel. It is recommended that the reagent be titrated for optimal performance for each		



application.

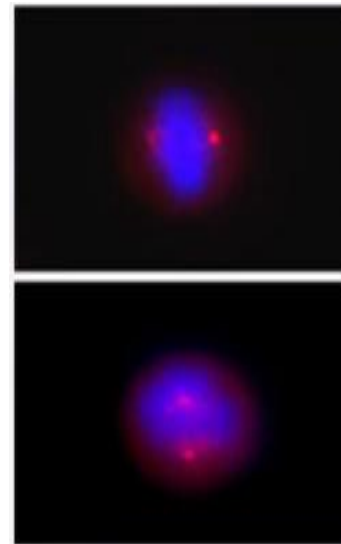
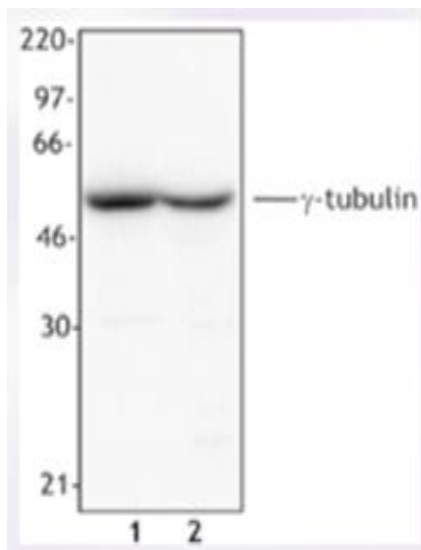
**Storage & Stability:** Upon receipt, store undiluted at 4° C.

**Modification:** Phosphorylation

**Interaction:** Interacts with  $\alpha$ -tubulin, paxillin, RAC GTPase activated protein 1

Cell extract from A431 cells (Lane 1) or NIH3T3 cells (Lane 2) was resolved by electrophoresis, transferred to nitrocellulose and probed with monoclonal anti- $\gamma$ -tubulin (Clone 14C11) antibody. Proteins were visualized using a goat anti-mouse secondary conjugated to HRP and a chemiluminescence detection system.

Overnight nocodazole treated Hela cells stained with purified mouse monoclonal antibody against  $\gamma$ -Tubulin (clone 14C11) followed by Rhodamine Red-X conjugated donkey anti-mouse IgG and DAPI.



NOT FOR HUMAN USE. FOR RESEARCH ONLY. NOT FOR DIAGNOSTIC OR THERAPEUTIC USE.



**Cell Sciences®**  
480 Neponset Street  
Bldg 12A  
Canton, MA 02021

Toll Free: 888-769-1246  
Phone: 781-828-0610  
Fax: 781-828-0542

E-mail: [info@cellsciences.com](mailto:info@cellsciences.com)  
Website: [www.cellsciences.com](http://www.cellsciences.com)