

YWHAZ

Rabbit Anti-Human YWHAZ/14-3-3 zeta/delta Clone Poly6148 pAb

Catalog No.	CSI14364 CSI14365	Quantity:	50 µl 200 µl
Alternate Names:	Protein kinase C inhibitor protein-1, Phospholipase A2, Tyrosine 3-monooxygenase/tryptophan 5-monooxygenase activation protein, zeta polypeptide (YWHAZ)		
Description:	The 30 kD 14-3-3 cytoplasmic protein participates in signal transduction by binding to phosphoserine-containing proteins and activating protein kinase C. This protein has also been shown to activate tyrosine/ tryptophan hydroxylases in presence of Ca ²⁺ /calmodulin-dependent protein kinase II, regulate insulin sensitivity, inhibit tuberin function, participate in actin cytoskeletal alterations, regulate cell adhesion, and inhibit the pro-apoptotic protein Bad. This protein forms dimers and can be modified by acetylation and phosphorylation. The δ isoform of 14-3-3 is phosphorylated on serine -185; phosphorylation disrupts dimerization. The 14-3-3 protein has been shown to interact with MAPKAPK2, IRS1, PKB/Akt, tuberin, cofilin, LIMK1, ADAM 22, and Bad proteins. The Poly6148 antibody has been shown to be useful for Western blotting of the mouse and human 14-3-3 protein.		
Modification:	Phosphorylation, Acetylation		
Gene ID:	7534		
Regulation:	Phosphorylation disrupts dimerization		
Distribution:	Cytoplasm		
Immunogen:	Recombinant (partial), N-terminal		
Isotype:	Rabbit IgG		
Clone:	Poly6148		
Structure:	14-3-3 protein superfamily, dimer, δ isoform is Ser185 phosphorylated; 30 kD		
Formulation:	This antibody is provided in phosphate-buffered solution, pH 7.2, containing 0.09% sodium azide and 50% glycerol. Precaution: Sodium azide is a poisonous and hazardous substance which should be handled by trained staff only.		
Purification:	The antibody was purified by antigen-affinity chromatography.		
Function:			



Mediates signal transduction by binding to phosphoserine-containing proteins. Activates PKC, tyrosine, tryptophan hydroxylases in presence of Ca²⁺/calmodulin-dependent protein kinase II. Regulates insulin sensitivity and cell adhesion.

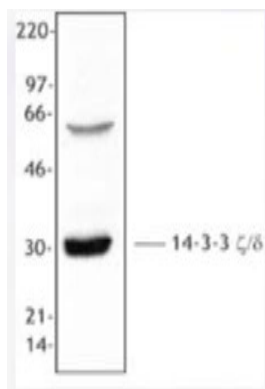
Reactivity: Mouse, Human

Applications: Western Blot

Recommended Usage: Each lot of this antibody is quality control tested by Western blotting. Western blotting, suggested working dilution(s): Use 10 µl per 5 ml antibody dilution buffer for each mini-gel. It is recommended that the reagent be titrated for optimal performance for each application.

Storage & Stability: Upon receipt, store frozen at -20° C.

Hela cell extract was resolved by electrophoresis, transferred to nitrocellulose, and probed with rabbit anti-14-3-3 ζ/δ antibody. Proteins were visualized using a donkey anti-rabbit secondary conjugated to HRP and a chemiluminescence detection system. This antibody detects the 14-3-3 ζ/δ protein (30 kD) as well as a protein of unknown identity with a molecular weight of approximately 60 kD.



NOT FOR HUMAN USE. FOR RESEARCH ONLY. NOT FOR DIAGNOSTIC OR THERAPEUTIC USE.



Cell Sciences®
480 Neponset Street
Bldg 12A
Canton, MA 02021

Toll Free: 888-769-1246
Phone: 781-828-0610
Fax: 781-828-0542

E-mail: info@cellsciences.com
Website: www.cellsciences.com