

UCP2

Rabbit Anti-Human Uncoupling Protein 2 Clone Poly6159 pAb

Catalog No.	CSI14378 CSI14379	Quantity:	50 µl 200 µl
Alternate Names:	Mitochondrial uncoupling protein 2, Uncoupling protein 2		
Description:	UCP2 also known as mitochondrial uncoupling protein 2 is a 33 kD member of the mitochondrial anion carrier protein family. This protein is expressed in the mitochondria and is highly expressed in brain, kidney, liver, brown adipose tissue, heart, and muscle tissue. UCP2 facilitates transfer of anions from the inner to the outer mitochondrial membrane and the return of protons from the outer to the inner mitochondrial membrane. This reduces mitochondrial membrane potential and induces mitochondrial "leak" in which oxidative phosphorylation is separated from ATP synthesis with energy dissipated as heat. UCP2 function has been linked to obesity and hyperinsulinemia and has been shown to be decreased by glucose and leptin in human islet cells. UCP2 has also been shown to interact with 14-3-3 β and γ isoforms. The Poly6159 antibody recognizes the N-terminal region of the human UCP2 protein and has been shown to be useful for Western blotting.		
Gene ID:	7351		
Regulation:	Decreased by glucose and leptin in human islets.		
Distribution:	Mitochondria. Expressed in brain, kidney, liver, brown adipose tissue, heart and muscle.		
Immunogen:	Recombinant (partial), C-terminal		
Isotype:	Rabbit IgG		
Clone:	Poly6159		
Structure:	Mitochondrial anion carrier protein family (MACP); 33 kD.		
Formulation:	This antibody is provided in phosphate-buffered solution, pH 7.2, containing 0.09% sodium azide and 50% glycerol. Precaution: Sodium azide is a poisonous and hazardous substance which should be handled by trained staff only.		
Purification:	The antibody was purified by antigen-affinity chromatography.		
Function:	Facilitates transfer of anions from inner to outer mitochondrial membrane and return of protons from outer to inner mitochondrial membrane. Reduces mitochondrial membrane potential.		



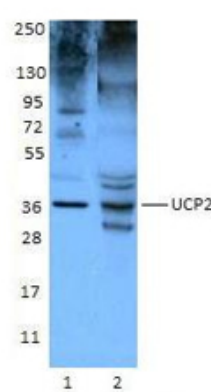
Reactivity: Human, **Cross-Reactivity:** Mouse, Rat

Applications: Western Blot

Recommended Usage: Each lot of this antibody is quality control tested by Western blotting. Western blotting, suggested working dilution(s): Use 10 µl per 5 ml antibody dilution buffer for each mini-gel. It is recommended that the reagent be titrated for optimal performance for each application.

Storage & Stability: Upon receipt, store frozen at -20° C.

Mouse liver cell lysate (Lane 1) and rat liver cell lysate (Lane 2) were resolved by electrophoresis, transferred to nitrocellulose, and probed with polyclonal anti-UCP2 antibody (clone Poly6159). Proteins were visualized using a donkey anti-rabbit secondary conjugated to HRP and chemiluminescence detection.



NOT FOR HUMAN USE. FOR RESEARCH ONLY. NOT FOR DIAGNOSTIC OR THERAPEUTIC USE.