

TUBG1

Rabbit Anti-Human Tubulin-Gamma Clone Poly6209 pAb

Catalog No.	CSI14402 CSI14403	Quantity:	50 µl 200 µl
Alternate Names:	GCP-1, TUBG, TUBGCP1, gamma-tubulin complex component 1, tubulin, gamma polypeptide		
Description:	γ-tubulin is a 51 kD member of the tubulin superfamily and is conserved between yeast and mammals. This cytoskeletal protein is highly expressed in centrosomes and is thought to be involved in cytoskeletal organization and mitosis. γ-tubulin is expressed at highest levels during prophase to metaphase and can be modified by phosphorylation. This protein has been shown to interact with α-tubulin, paxillin, and RAC GTPase activated protein 1. The Poly6209 antibody has been shown to be useful for Western blotting of human and mouse γ-tubulin.		
Structure:	Tubulin superfamily, highly conserved between yeast and mammals. Predicted molecular weight approximately 51 kD.		
Gene ID:	7283		
Distribution:	Cytoskeletal protein, high expressed in centrosomes.		
Function:	Cytoskeletal organization, mitosis		
Host:	Rabbit		
Immunogen:	Peptide-KLH		
Isotype:	IgG		
Clone:	Poly6209		
Regulation:	Expressed at highest levels during prophase to metaphase.		
Formulation:	This antibody is provided in phosphate-buffered solution, pH 7.2, containing 0.09% sodium azide and 50% glycerol. Precaution: Sodium azide is a poisonous and hazardous substance which should be handled by trained staff only.		
Purification:	The antibody was purified by antigen-affinity chromatography.		
Modification:	Phosphorylation		
Reactivity:	Human, Mouse		
Applications:	Western Blot, IF		
Recommended Usage:	Each lot of this antibody is quality control tested by Western blotting. Western blotting, suggested working dilution(s): Use 10 µl per 5 ml antibody dilution buffer for each mini-		



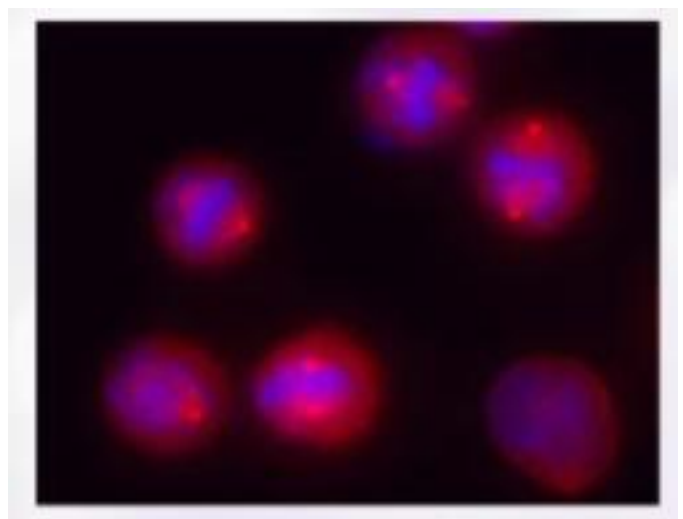
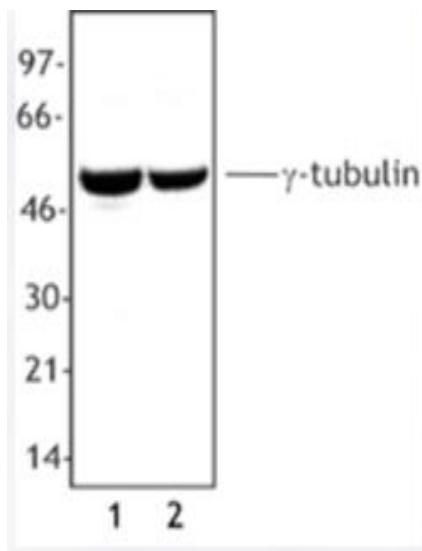
gel. It is recommended that the reagent be titrated for optimal performance for each application.

Storage & Stability: Upon receipt, store frozen at -20° C.

Interaction: Interacts with α -tubulin, paxillin, RAC GTPase activated protein 1

Whole cell extract from A431 cells (Lane 1) and NIH3T3 cells (Lane 2) were resolved by electrophoresis, transferred to nitrocellulose and probed with rabbit anti- γ -tubulin antibody. Proteins were visualized using a donkey anti-rabbit secondary conjugated to HRP and a chemiluminescence detection system.

Overnight nocodazole treated Hela cells stained with purified rabbit polyclonal antibody against γ -tubulin, followed by Rhodamine Red-X conjugated goat anti-rabbit IgG and DAPI.



NOT FOR HUMAN USE. FOR RESEARCH ONLY. NOT FOR DIAGNOSTIC OR THERAPEUTIC USE.



Cell Sciences®
480 Neponset Street
Bldg 12A
Canton, MA 02021

Toll Free: 888-769-1246
Phone: 781-828-0610
Fax: 781-828-0542

E-mail: info@cellsciences.com
Website: www.cellsciences.com