

NEK9

Rabbit Anti-Human NIMA-related Kinase 9 Clone Poly6241 pAb

Catalog No.	CSI14426 CSI14427	Quantity:	50 µl 200 µl
Alternate Names:	Serine/Threonine-protein kinase Nek9, NimA-related protein kinase 9		
Description:	NEK9 is a 107 kD member of the serine/threonine-protein kinase family, NIMA subfamily containing a coiled-coil domain, and RCC1 repeats. This cytoplasmic protein forms dimers and is a pleiotropic regulator of mitotic progression, participating in the control of spindle dynamics and chromosome separation, Nek9 is activated during mitosis by intramolecular autophosphorylation at Thr210. Nek9 has been shown to interact with Ran GTPase (greater affinity for Ran-GDP over Ran-GTP), NEK6, NEK7, BICD2, histone H3, myelin basic protein, and β -casein. The Poly6241 antibody recognizes human NEK9 and has been shown to be useful for Western blotting, immunohistochemistry, and immunoprecipitation.		
Structure:	Serine/Threonine protein kinase family, NIMA subfamily, coiled-coil domain, RCC1 repeats, dimer; 107 kD.		
Gene ID:	91754		
Distribution:	Cytoplasm		
Function:	Pleiotropic regulator of mitotic progression, participates in control of spindle dynamics and chromosome separation.		
Host:	Rabbit		
Immunogen:	Partial recombinant protein, responding to the middle region of NEK-9		
Isotype:	IgG		
Clone:	Poly6241		
Regulation:	Activated during mitosis by intramolecular autophosphorylation.		
Formulation:	This antibody is provided in phosphate-buffered solution, pH 7.2, containing 0.09% sodium azide and 50% glycerol. Precaution: Sodium azide is a poisonous and hazardous substance which should be handled by trained staff only.		
Purification:	The antibody was purified by antigen-affinity chromatography.		
Interaction:	Ran GTPase, greater affinity for Ran-GDP over Ran-GTP, NEK6, NEK7, BICD2, histone H3, myelin basic protein, β -casein.		

Reactivity: Reacts with human NEK9

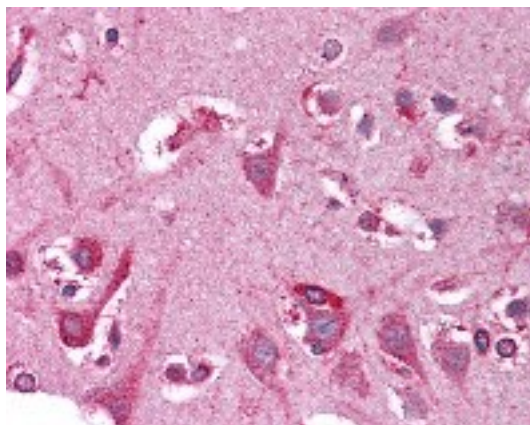
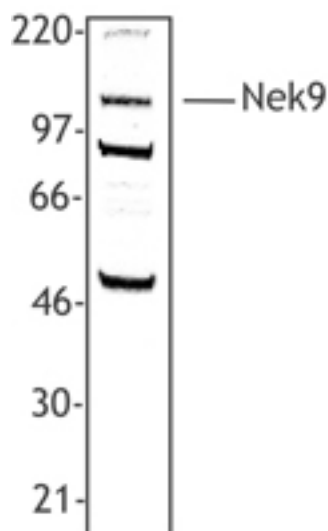
Applications: WB, IHC, IP

Recommended Usage: Each lot of this antibody is quality control tested by Western blotting. Western blotting, suggested working dilution(s): Use 10 µl per 5 ml antibody dilution buffer for each mini-gel. For IHC, use a 1:50 dilution of antibody for staining. Antigen retrieval for IHC of formalin-fixed paraffin-embedded tissue using 0.01 M sodium citrate buffer is recommended. It is recommended that the reagent be titrated for optimal performance for each application.

Storage & Stability: Upon receipt, store frozen at -20° C.

Hela cell extract was resolved by electrophoresis, transferred to nitrocellulose and probed with rabbit anti-NEK9 polyclonal antibody. Proteins were visualized using a donkey anti-rabbit secondary conjugated to HRP and a chemiluminescence detection system.

Formalin-fixed paraffin-embedded human brain cortex tissue was stained with Poly6241 and developed with an alkaline phosphatase chromogen substate (red color). Tissue was counterstained with H&E (blue/pink). Magnification, 40X.



NOT FOR HUMAN USE. FOR RESEARCH ONLY. NOT FOR DIAGNOSTIC OR THERAPEUTIC USE.



Cell Sciences®
480 Neponset Street
Bldg 12A
Canton, MA 02021

Toll Free: 888-769-1246
Phone: 781-828-0610
Fax: 781-828-0542

E-mail: info@cellsciences.com
Website: www.cellsciences.com