

TUBA1B

Mouse Anti-Human TUBA1B Clone TU-01 mAb

Catalog No.	CS114446 CS114447	Quantity:	25 µg 100 µg
Alternate Names:	α-tubulin, Tubulin, alpha-ubiquitous chain		
Description:	Tubulin, one of the major constituents of microtubules, is a dimeric protein consisting of an alpha and beta chain. Tubulin is a highly conserved protein that is ubiquitously expressed. Tubulin is a GTP-binding protein that can be modified by phosphorylation and acetylation. Tubulin interacts with a variety of proteins including RAC GTPase activating protein 1, ZAP70, Polo-like kinase, c-Myc, Fyn, and microtubule associated protein 1A. The TU-01 antibody recognizes α-tubulin in all species and is useful for Western blotting, immunofluorescence staining, and immunohistochemistry. The TU-01 antibody is frequently used to monitor protein loading in Western blotting		
Structure:	Tubulin family, tubulin is a dimeric protein consisting of an alpha and beta chain. Alpha tubulin has an approximate molecular weight of 50-55 kD.		
Gene ID:	10376		
Function:	Tubulin is one of the major constituents of microtubules. Binds GTP, alpha chain contains a non-exchangeable GTP binding site		
Specificity:	Tubulin family, tubulin is a dimeric protein consisting of an alpha and beta chain. Alpha tubulin has an approximate molecular weight of 50-55 kD.		
Usage:	Each lot of this antibody is quality control tested by Western blotting. For Western blotting, suggested working dilution(s): Use 5 µg per 5 ml antibody dilution buffer for each mini-gel. It is recommended that the reagent be titrated for optimal performance for each		
Immunogen:	Fraction of tubulin purified from pig brain by two cycles of polymerization-depolymerization		
Isotype:	Mouse IgG1, κ		
Clone:	TU-01		
Function:	Tubulin is one of the major constituents of microtubules. Binds GTP, alpha chain contains a non-exchangeable GTP binding site		
Formulation:	This antibody was purified by affinity chromatography.		
Interaction:	RAC GTPase activating protein 1, ZAP70, Polo-like kinase, c-Myc, Fyn, Microtubule associated protein 1A		
Modification:	Phosphorylation, acetylation		
Reactivity:	All (recognized epitope conserved within all species)		
Applications:	Western Blot, IF, IHC		

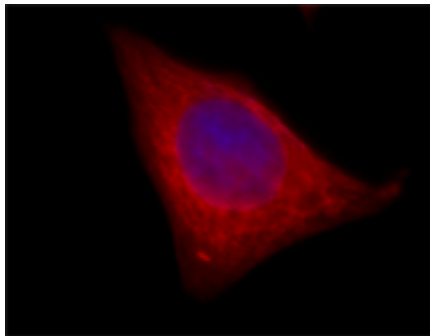


Application Notes: Additional reported applications (for the relevant formats) include: immunohistochemistry, and immunofluorescence microscopy.

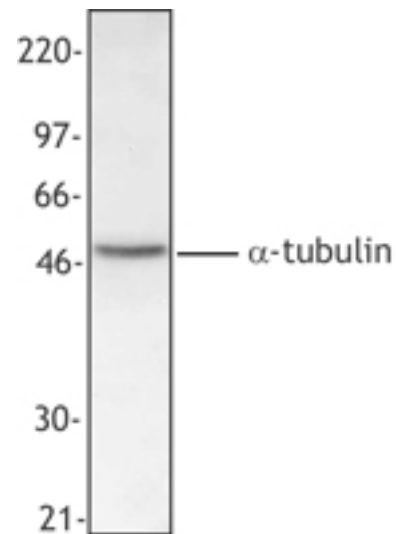
Storage & Stability: Upon receipt, store undiluted at 4° C.

Interaction: RAC GTPase activating protein 1, ZAP70, Polo-like kinase, c-Myc, Fyn, Microtubule associated protein 1A

Hela cells were stained with anti-Tubulin- α and secondarily labeled with DyLight™ 549 goat anti-mouse IgG1 (clone Poly24091).



HepG2 cell extract was resolved by electrophoresis, transferred to nitrocellulose and probed with monoclonal antibody against α -tubulin. Proteins were visualized using a goat anti-mouse secondary conjugated to HRP and a chemiluminescence detection system.



NOT FOR HUMAN USE. FOR RESEARCH ONLY. NOT FOR DIAGNOSTIC OR THERAPEUTIC USE.



Cell Sciences®
480 Neponset Street
Bldg 12A
Canton, MA 02021

Toll Free: 888-769-1246
Phone: 781-828-0610
Fax: 781-828-0542

E-mail: info@cellsciences.com
Website: www.cellsciences.com