

## MCM2

### Rabbit Anti-Human Minichromosome Maintenance Complex Component 2 Clone Poly6022 pAb

<b>Catalog No.</b>	CSI14486 CSI14487	<b>Quantity:</b>	50 µl 200 µl
<b>Alternate Names:</b>	Minichromosome maintenance protein 2, Cdc19		
<b>Description:</b>	The MCM2 protein (minichromosome maintenance protein 2) is a 120 kD member of the MCM family that forms a heterotetramer with other family members. This nuclear protein functions in eukaryotic genome replication. MCM2 forms a complex with MCM4, MCM6, and MCM7. MCM2 regulates the helicase activity of the pre-replication complex and is involved in the formation of replication forks. MCM2 is regulated by protein kinases Cdc2 and Cdc7 and can be modified by phosphorylation. The Poly6022 antibody recognizes the C-terminal region of both human and mouse MCM2 and has been shown to be useful for Western blotting.		
<b>Structure:</b>	MCM family, heterotetramer; 120 kD.		
<b>Gene ID:</b>	4171		
<b>Distribution:</b>	Nuclear		
<b>Function:</b>	Initiation of eukaryotic genome replication. Forms complex with MCM4, MCM6, MCM7. Regulates helicase activity of pre-replication complex, involved in formation of replication forks.		
<b>Host:</b>	Rabbit		
<b>Immunogen:</b>	Recombinant (partial), C-terminal		
<b>Isotype:</b>	IgG		
<b>Clone:</b>	Poly6022		
<b>Regulation:</b>	Regulated by protein kinases Cdc2, Cdc7		
<b>Formulation:</b>	This antibody is provided in phosphate-buffered solution, pH 7.2, containing 0.09% sodium azide and 50% glycerol. <b>Precaution:</b> Sodium azide is a poisonous and hazardous substance which should be handled by trained staff only.		
<b>Purification:</b>	The antibody was purified by antigen-affinity chromatography.		
<b>Modification:</b>	Phosphorylation		
<b>Reactivity:</b>	Mouse, Human		
<b>Applications:</b>	WB, IF		



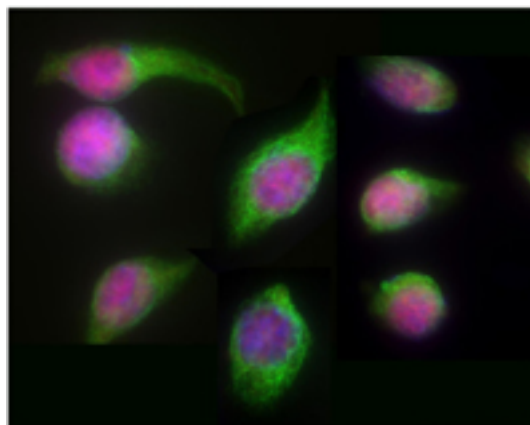
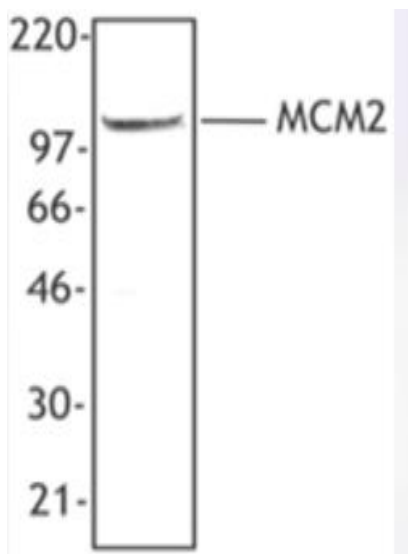
**Recommended Usage:** Each lot of this antibody is quality control tested by Western blotting. Western blotting, suggested working dilution(s): Use 10 µl per 5 ml antibody dilution buffer for each mini-gel. For immunofluorescence microscopy: Use a dilution range of 1:100~1:400. It is recommended that the reagent be titrated for optimal performance for each application.

**Storage & Stability:** Upon receipt, store frozen at -20° C.

**Interaction:** MCM4, MCM6, MCM7

Hela cell nuclear extract was resolved by electrophoresis, transferred to nitrocellulose and probed with rabbit anti-MCM2 antibody. Proteins were visualized using a donkey anti-rabbit secondary antibody conjugated to HRP and a chemiluminescence system.

Immunofluorescent microscope analysis of Hela cells using anti-MCM2 polyclonal antibody (poly6022) (red).  $\alpha$ -tubulin (clone 10D8) has been labeled with green and nuclei were stain with DAPI (blue).



NOT FOR HUMAN USE. FOR RESEARCH ONLY. NOT FOR DIAGNOSTIC OR THERAPEUTIC USE.



**Cell Sciences®**  
480 Neponset Street  
Bldg 12A  
Canton, MA 02021

Toll Free: 888-769-1246  
Phone: 781-828-0610  
Fax: 781-828-0542

E-mail: [info@cellsciences.com](mailto:info@cellsciences.com)  
Website: [www.cellsciences.com](http://www.cellsciences.com)