

MCM3

Rabbit Anti-Human Minichromosome Maintenance Complex Component 3 Clone Poly6023 pAb

Catalog No.	CSI14488 CSI14489	Quantity:	50 µl 200 µl
Alternate Names:	Minichromosome maintenance protein 3		
Description:	The MCM3 protein (minichromosome maintenance protein 3) is a 110 kD DNA-dependent ATPase containing a nuclear localization sequence. The MCM3 protein is a component of the DNA pre-replication complex that acts to allow DNA to undergo single round of replication per cell cycle. MCM3 is constitutively expressed and can be modified by acetylation. Acetylation of MCM3 inhibits the initiation of DNA replication. MCM3 has been reported to interact with the MCM5 (CDC46) and MCM3AP proteins. The Poly6023 antibody recognizes both human and mouse MCM3 and has been shown to be useful for Western blotting.		
Structure:	DNA-dependent ATPase, nuclear localization sequence; 110 kD.		
Gene ID:	4172		
Distribution:	Nuclear		
Function:	Component of DNA pre-replication complex. Allows DNA to undergo single round of replication per cell cycle.		
Host:	Rabbit		
Immunogen:	Peptide		
Isotype:	IgG		
Clone:	Poly6023		
Regulation:	Constitutively expressed, acetylation inhibits the initiation of DNA replication.		
Formulation:	This antibody is provided in phosphate-buffered solution, pH 7.2, containing 0.09% sodium azide and 50% glycerol. Precaution: Sodium azide is a poisonous and hazardous substance which should be handled by trained staff only.		
Purification:	The antibody was purified by antigen-affinity chromatography.		
Modification:	Acetylation		
Reactivity:	Mouse, Human		
Applications:	Western Blot		

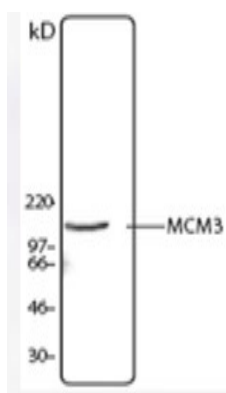


Recommended Usage: Each lot of this antibody is quality control tested by Western blotting. Western blotting, suggested working dilution(s): Use 10 µl per 5 ml antibody dilution buffer for each mini-gel. It is recommended that the reagent be titrated for optimal performance for each application.

Storage & Stability: Upon receipt, store frozen at -20° C.

Interaction: MCM5 (CDC46), MCM3AP

Hela cell nuclear extract was resolved by electrophoresis, transferred to nitrocellulose and probed with rabbit anti-MCM3 antibody. Proteins were visualized using a donkey anti-rabbit secondary antibody conjugated to HRP and a chemiluminescence system.



NOT FOR HUMAN USE. FOR RESEARCH ONLY. NOT FOR DIAGNOSTIC OR THERAPEUTIC USE.



Cell Sciences®
480 Neponset Street
Bldg 12A
Canton, MA 02021

Toll Free: 888-769-1246
Phone: 781-828-0610
Fax: 781-828-0542

E-mail: info@cellsciences.com
Website: www.cellsciences.com