

MCM3

Rabbit Anti-Human Minichromosome Maintenance Complex Component 5 Clone Poly6025 pAb

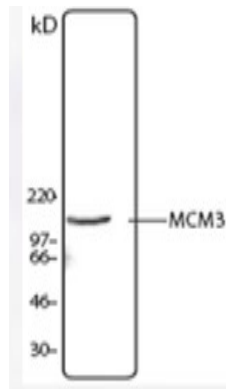
Catalog No.	CSI14490 CSI14491	Quantity:	50 µl 200 µl
Alternate Names:	Minichromosome maintenance protein 3		
Description:	The MCM3 protein (minichromosome maintenance protein 3) is a 110 kD DNA-dependent ATPase containing a nuclear localization sequence. The MCM3 protein is a component of the DNA pre-replication complex that acts to allow DNA to undergo single round of replication per cell cycle. MCM3 is constitutively expressed and can be modified by acetylation. Acetylation of MCM3 inhibits the initiation of DNA replication. MCM3 has been reported to interact with the MCM5 (CDC46) and MCM3AP proteins. The Poly6023 antibody recognizes both human and mouse MCM3 and has been shown to be useful for Western blotting.		
Structure:	DNA-dependent ATPase, approximately 82 kD.		
Gene ID:	4172		
Distribution:	Nuclear		
Function:	Component of DNA pre-replication complex.		
Host:	Rabbit		
Immunogen:	Peptide		
Isotype:	IgG		
Clone:	Poly6023		
Regulation:	Upregulated in G0 to G1/S cell cycle phase.		
Formulation:	This antibody is provided in phosphate-buffered solution, pH 7.2, containing 0.09% sodium azide and 50% glycerol. Precaution: Sodium azide is a poisonous and hazardous substance which should be handled by trained staff only.		
Purification:	The antibody was purified by antigen-affinity chromatography.		
Interaction:	MCM3		
Reactivity:	Mouse, Human		
Applications:	Western Blot		
Recommended Usage:			



Each lot of this antibody is quality control tested by Western blotting. Western blotting, suggested working dilution(s): Use 10 µl per 5 ml antibody dilution buffer for each mini-gel. It is recommended that the reagent be titrated for optimal performance for each application.

Storage & Stability: Upon receipt, store frozen at -20° C.

Hela cell nuclear extract was resolved by electrophoresis, transferred to nitrocellulose and probed with rabbit anti-MCM3 antibody. Proteins were visualized using a donkey anti-rabbit secondary antibody conjugated to HRP and a chemiluminescence system.



NOT FOR HUMAN USE. FOR RESEARCH ONLY. NOT FOR DIAGNOSTIC OR THERAPEUTIC USE.

