

MCM6

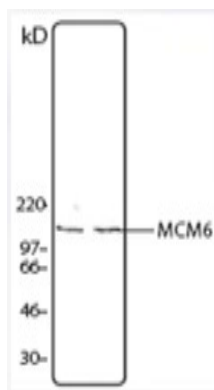
Rabbit Anti-Human Minichromosome Maintenance Complex Component 6 Clone Poly6026 pAb

Catalog No.	CSI14492 CSI14493	Quantity:	50 µl 200 µl
Alternate Names:	Minichromosome maintenance protein 6		
Description:	The MCM6 protein (minichromosome maintenance protein 6) is a nuclear 115 kD DNA-dependent ATPase. The MCM6 protein is a component of the DNA pre-replication complex that acts to allow DNA to undergo single round of replication per cell cycle. MCM6 together with MCM4 and MCM7 have DNA helicase activity. MCM6 has been reported to interact with the MCM4 and MCM7 (to form a 600 kD complex with helicase activity). The Poly6026 antibody recognizes both human and mouse MCM6 and has been shown to be useful for Western blotting.		
Structure:	DNA-dependent ATPase; 115 kD.		
Gene ID:	4175		
Distribution:	Nuclear		
Function:	Component of DNA pre-replication complex.		
Host:	Rabbit		
Immunogen:	Peptide-KLH (KYLQLAEELIRPERNT)		
Isotype:	IgG		
Clone:	Poly6026		
Interaction:	MCM4, MCM7 (600 kD complex with helicase activity)		
Formulation:	This antibody is provided in phosphate-buffered solution, pH 7.2, containing 0.09% sodium azide and 50% glycerol. Precaution: Sodium azide is a poisonous and hazardous substance which should be handled by trained staff only.		
Purification:	The antibody was purified by antigen-affinity chromatography.		
Reactivity:	Mouse, Human		
Applications:	WB - Quality tested		
Recommended Usage:	Each lot of this antibody is quality control tested by Western blotting. Western blotting, suggested working dilution(s): Use 10 µl per 5 ml antibody dilution buffer for each mini-gel. It is recommended that the reagent be titrated for optimal performance for each application.		



Storage & Stability: Upon receipt, store frozen at -20° C.

Hela (left lane) and NIH-3T3 (right lane) cell lysate was resolved by electrophoresis, transferred to nitrocellulose and probed with rabbit anti-MCM6 antibody. Proteins were visualized using a donkey anti-rabbit secondary antibody conjugated to HRP and a chemiluminescence system.



NOT FOR HUMAN USE. FOR RESEARCH ONLY. NOT FOR DIAGNOSTIC OR THERAPEUTIC USE.



Cell Sciences®
480 Neponset Street
Bldg 12A
Canton, MA 02021

Toll Free: 888-769-1246
Phone: 781-828-0610
Fax: 781-828-0542

E-mail: info@cellsciences.com
Website: www.cellsciences.com