

## MCM7

### Rabbit Anti-Human Minichromosome Maintenance Complex Component 7 Clone Poly6027 pAb

<b>Catalog No.</b>	CSI14494 CSI14495	<b>Quantity:</b>	50 µl 200 µl
<b>Alternate Names:</b>	Minichromosome maintenance protein 7		
<b>Description:</b>	<p>The MCM7 protein (DNA replication licensing factor 7) is a member of the MCM family that forms a heterohexamer with other family members. This nuclear protein functions in the initiation of eukaryotic genome replication. MCM7 forms a complex with MCM4, and MCM6 (two subunits of MCM7, two subunits of MCM4 and two subunits of MCM7). This complex regulates the helicase activity of the pre-replication complex and is involved in the formation of replication forks. MCM7 is regulated ubiquitination. In addition to MCM4 and MCM6, this protein has been shown to interact with Cdk4. Two isoforms of MCM7 have been reported with molecular weights of 61 kD and 90 kD. The Poly6027 antibody recognizes the C-terminal region of both human and mouse MCM7 and has been shown to be useful for Western blotting.</p>		
<b>Structure:</b>	MCM family, heterohexamer. Two isoforms approximately 61 kD, 90 kD.		
<b>Gene ID:</b>	4176		
<b>Distribution:</b>	Nuclear		
<b>Function:</b>	Initiation of eukaryotic genome replication. Heterohexamer of MCM7/4/6/6/4/7 regulating helicase activity of pre-replication complex.		
<b>Host:</b>	Rabbit		
<b>Immunogen:</b>	Recombinant, C-terminal		
<b>Isotype:</b>	IgG		
<b>Clone:</b>	Poly6027		
<b>Modification:</b>	Ubiquitination		
<b>Formulation:</b>	<p>This antibody is provided in phosphate-buffered solution, pH 7.2, containing 0.09% sodium azide and 50% glycerol. <b>Precaution:</b> Sodium azide is a poisonous and hazardous substance which should be handled by trained staff only.</p>		
<b>Purification:</b>	The antibody was purified by antigen-affinity chromatography.		
<b>Interaction:</b>	4, MCM6, Cdk4		
<b>Reactivity:</b>	Mouse, Human		

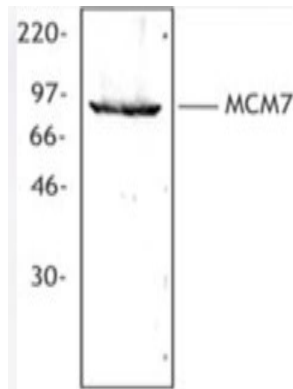


**Applications:** WB - Quality tested

**Recommended Usage:** Each lot of this antibody is quality control tested by Western blotting. Western blotting, suggested working dilution(s): Use 10 µl per 5 ml antibody dilution buffer for each mini-gel. It is recommended that the reagent be titrated for optimal performance for each application.

**Storage & Stability:** Upon receipt, store frozen at -20° C.

Hela cell nuclear extract was resolved by electrophoresis, transferred to nitrocellulose, and probed with rabbit polyclonal antibody against MCM7. Proteins were visualized using a donkey anti-rabbit secondary conjugated to HRP and a chemiluminescence detection system.



NOT FOR HUMAN USE. FOR RESEARCH ONLY. NOT FOR DIAGNOSTIC OR THERAPEUTIC USE.