

SSRP1

Mouse Anti-Human Structure Specific Recognition Protein 1 Clone 3E4 mAb

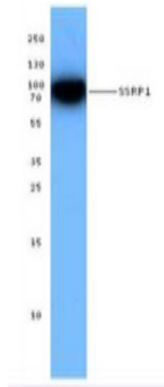
Catalog No.	CSI14523 CSI14524	Quantity:	25 µg 100 µg
Alternate Names:	FACT, FACT80, T160, chromatin-specific transcription elongation factor 80 kDa subunit, cisplatin-DNA SSRP, facilitates chromatin remodeling 80 kDa subunit, high mobility group box, recombination signal sequence recognition protein		
Description:	SSRP1 is a nuclear protein and a component of the FACT complex (facilitates chromatin transcription). The FACT140 complex is composed of the Spt16 and the SSRP1 proteins. This complex interacts with nucleosomes and histone H2A/H2B dimers to promote nucleosome disassembly and allow transcription elongation. This protein interacts with dsDNA. The SSRP1 protein has been shown to be modified by cisplatin and may protect DNA from repair and block DNA replication. The 3E4 monoclonal antibody recognizes human SSRP1 and has been shown to be useful for Western blotting.		
Concentration:	0.5 mg/ml		
Gene ID:	6749		
Structure:	SSRP family, HMG box domain; 81 kD.		
Function:	Nuclear		
Host:	Mouse		
Immunogen:	Recombinant (partial)		
Isotype:	IgG1, κ		
Clone:	3E4		
Interaction:	Component of FACT ATP-dependent chromatin remodeling complex, Spt16/Cdc68 in FACT complex, H2A/H2B dimers.		
Formulation:	This antibody is provided in phosphate-buffered solution, pH 7.2, containing 0.09% sodium azide at 0.5 mg/ml. Precaution: Sodium azide is a poisonous and hazardous substance which should be handled by trained staff only.		
Purification:	The antibody was purified by protein G affinity chromatography.		
Reactivity:	Human		
Applications:	WB, IP, IF		



Recommended Usage: Each lot of this antibody is quality control tested by Western blotting. Western blotting, suggested working dilution(s): Use 5 µg per 5 ml antibody dilution buffer for each mini-gel. It is recommended that the reagent be titrated for optimal performance for each application.

Storage & Stability: Upon receipt, store undiluted at 4° C.

293E cell extracts were resolved by electrophoresis, transferred to nitrocellulose, and probed with purified anti-SSRP1 Antibody (clone 3E4). Proteins were visualized using a goat anti-mouse-IgG secondary conjugated to HRP and chemiluminescence detection.



NOT FOR HUMAN USE. FOR RESEARCH ONLY. NOT FOR DIAGNOSTIC OR THERAPEUTIC USE.



Cell Sciences®
480 Neponset Street
Bldg 12A
Canton, MA 02021

Toll Free: 888-769-1246
Phone: 781-828-0610
Fax: 781-828-0542

E-mail: info@cellsciences.com
Website: www.cellsciences.com