

## PHB2

### Rabbit Anti-Human Prohibitin 2 Clone Poly6118 pAb

|                         |   |                  |                 |
|-------------------------|---|------------------|-----------------|
| <b>Catalog No.</b>      | CSI14547<br>CSI14548  | <b>Quantity:</b> | 50 µl<br>200 µl |
| <b>Alternate Names:</b> | BAP, BCAP37, Bap37, MGC117268, PNAS-141, REA, p22, B-cell associated protein, repressor of estrogen receptor activity   |                  |                 |
| <b>Description:</b>     | BAP37, (also known as B-cell receptor-associated protein, repressor of estrogen receptor activity, and prohibitin 2) is a 37 kD erythrocyte band 7 integral membrane protein that contains an SPFH domain. BAP37 is located in the inner mitochondrial membrane that selectively potentiates the inhibitory effectiveness of antiestrogen-occupied ER. BAP37 plays a possible role in cell aging and acts as a mitochondrial protein chaperone. This protein has been shown to interact with the estrogen receptor, prohibitin, and IgM. The Poly6118 antibody has been shown to be useful for Western blotting of the human and mouse BAP37 protein. |                  |                 |
| <b>Structure:</b>       | Erythrocyte band 7 integral membrane protein, SPFH domain; 37 kD.   |                  |                 |
| <b>Gene ID:</b>         | 11331   |                  |                 |
| <b>Distribution:</b>    | Inner mitochondrial membrane, integral membrane protein.  |                  |                 |
| <b>Function:</b>        | Selectively potentiates inhibitory effectiveness of antiestrogen-occupied ER; possible role in cell aging and acts as a mitochondrial protein chaperone.  |                  |                 |
| <b>Host:</b>            | Rabbit  |                  |                 |
| <b>Immunogen:</b>       | Recombinant (partial) , C-terminal  |                  |                 |
| <b>Isotype:</b>         | IgG   |                  |                 |
| <b>Clone:</b>           | Poly6118  |                  |                 |
| <b>Interaction:</b>     | Estrogen receptor, prohibitin and IgM.  |                  |                 |
| <b>Formulation:</b>     | This antibody is provided in phosphate-buffered solution, pH 7.2, containing 0.09% sodium azide and 50% glycerol. <b>Precaution:</b> Sodium azide is a poisonous and hazardous substance which should be handled by trained staff only.   |                  |                 |
| <b>Purification:</b>    | The antibody was purified by antigen-affinity chromatography.   |                  |                 |
| <b>Reactivity:</b>      | Mouse, Human  |                  |                 |
| <b>Applications:</b>    | WB, IF  |                  |                 |

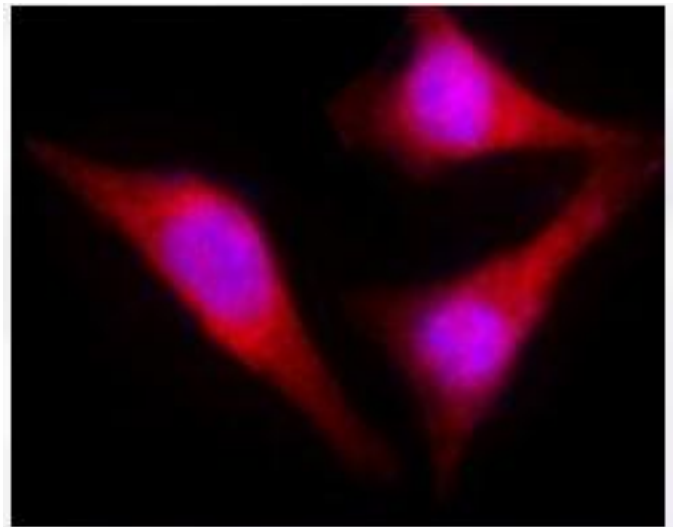
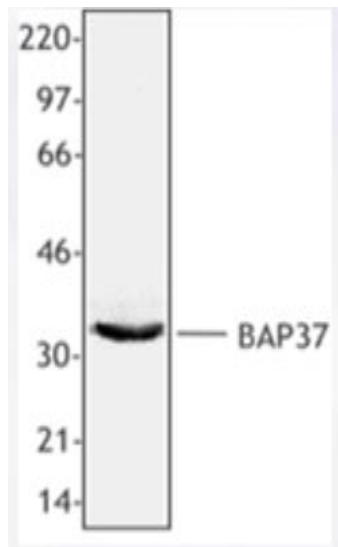


**Recommended Usage:** Each lot of this antibody is quality control tested by Western blotting. Western blotting, suggested working dilution(s): Use 10 µl per 5 ml antibody dilution buffer for each mini-gel. For immunofluorescence microscopy: Use a starting dilution of 1:100. It is recommended that the reagent be titrated for optimal performance for each application.

**Storage & Stability:** Upon receipt, store frozen at -20° C.

MCF-7 whole cell extract was resolved by electrophoresis, transferred to nitrocellulose and probed with rabbit anti-BAP37 antibody. Proteins were visualized using a donkey anti-rabbit secondary conjugated to HRP and a chemiluminescence detection system.

Immunofluorescent microscope analysis of Hela cells using anti-BAP37 polyclonal antibody (red). Nuclei were stain with DAPI (blue).



NOT FOR HUMAN USE. FOR RESEARCH ONLY. NOT FOR DIAGNOSTIC OR THERAPEUTIC USE.



**Cell Sciences®**  
480 Neponset Street  
Bldg 12A  
Canton, MA 02021

Toll Free: 888-769-1246  
Phone: 781-828-0610  
Fax: 781-828-0542

E-mail: [info@cellsciences.com](mailto:info@cellsciences.com)  
Website: [www.cellsciences.com](http://www.cellsciences.com)