

KIR2DL3

Anti-Human KIR2DL3 Clone 190IIC311 mAb

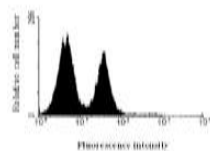
Catalog No.	CSI15539A CSI15539B	Quantity:	50 µl 100 µl
Alternate Names:	p58, NKAT, GL183, NKAT2, CD158b, NKAT2A, NKAT2B, CD158B2, KIR-K7b, KIR-K7c, KIRCL23, KIR-023GB		
Description:	Reacts with extracellular domain of the KIR2DL3, a member of the killer cell immunoglobulin-like receptor(KIR) family. The KIR family consists of transmembrane glycoproteins of the Ig superfamily expressed on human NK cells and a subset of human T cells which they are involved in recognition of either MHC class I molecules or unknown ligand on target cells and inhibit cytotoxic activities.		
Concentration:	1 mg/ml		
Gene ID:	3804		
Protein Accession No.	NP_05326		
Immunogen:	Recombinant human KIR2DL3 (19-161 aa) purified from <i>E. coli</i>		
Isotype:	Mouse IgG _{2a} heavy chains and κ light chains		
Clone:	Anti-Hu KIR2DL3 mAb, clone 190IIC311, is derived from hybridization of mouse P3-x63-Ag8.653 myeloma cells with spleen cells from BALB/c mice immunized with recombinant KIR2DL3.		
Formulation:	Liquid. Supplied in Phosphate-Buffered Saline (pH 7.4) with 0.1% Sodium Azide. Precaution: Sodium azide is a poisonous and hazardous substance which should be handled by trained staff only.		
Usage:	The antibody has been tested by ELISA, Western blot and immunofluorescent staining with flow cytometric analysis to assure specificity. Since application varies, however, each investigation should be titrated by the reagent to obtain optimal results. Applications include flow cytometry (5-10g/1×10 ⁶). Note: this product is routinely tested on peripheral blood mononuclear cells(PBMCs) or natural killer(NK) cells. The histogram is an example of the expected reactivity.), ELISA (1:1,000 when tested against the immunized protein) and western blot analysis (1µg/ml).		
Applications:	ELISA, WB, FACS		



Storage & Stability:

Can be stored at +4°C. For long term storage, aliquot and store at -20°C. **Avoid repeated freezing and thawing cycles.**

Profile of HK cells analyzed by flow

**ELISA**

KIP2DL1	KIP2DL3	KIP2DS4
-	++	-

Western blotting

KIP2DL1	KIP2DL3	KIP2DS4
-	++	-

NOT FOR HUMAN USE. FOR RESEARCH ONLY. NOT FOR DIAGNOSTIC OR THERAPEUTIC USE.



Cell Sciences®
480 Neponset Street
Bldg 12A
Canton, MA 02021

Toll Free: 888-769-1246
Phone: 781-828-0610
Fax: 781-828-0542

E-mail: info@cellsciences.com
Website: www.cellsciences.com