

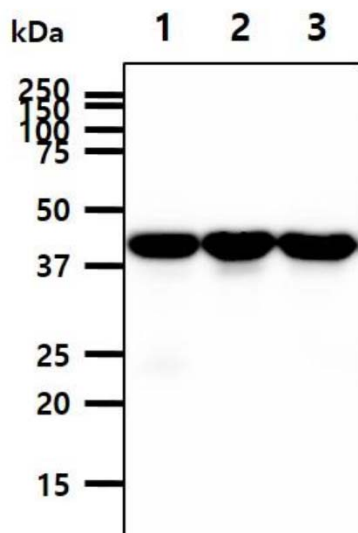
PPP2CA

Mouse Anti-Human PP2C α Clone p6c7 mAb

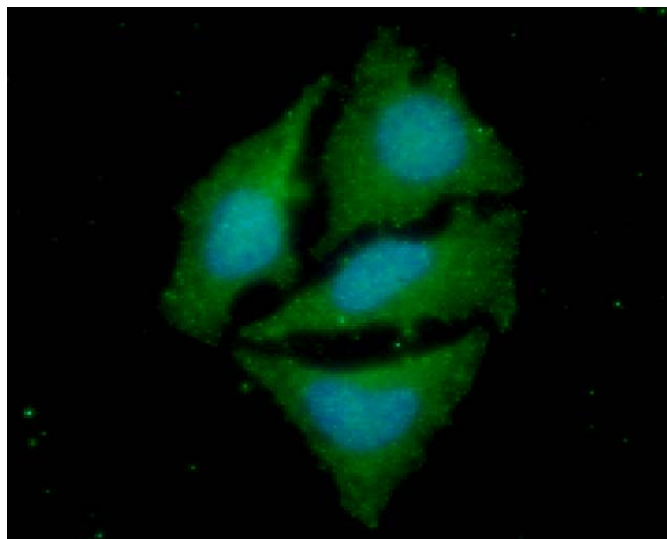
Catalog No.	CSI15541A CSI15541B	Quantity:	50 μ L 100 μ L
Alternate Names:	PP2Ac, PP2CA, RP-C, PP2A-alpha, protein phosphatase 2, catalytic subunit, alpha isoform, replication protein C, serine/threonine protein phosphatase 2A, catalytic subunit, alpha isoform, serine/threonine-protein phosphatase 2A catalytic subunit alpha isoform		
Description:	Protein phosphatase 2C(PP2C α) is a Mn ²⁺ - or Mg ²⁺ -dependent protein serine/threonine phosphatase that inhibits the human stress-responsive p38 and JNK MAPK pathways and regulates cellular stress response in eukaryotes. The PPM (metal-dependent protein phosphatase) family of Ser/Thr protein phosphatases have recently been shown to down-regulate the stress response pathways in eukaryotes. Within the stress pathway, key signaling kinases, which are activated by protein phosphorylation, have been proposed as the <i>in vivo</i> substrates of PP2C, the prototypical member of the PPM family.		
Concentration:	1 mg/mL		
Gene ID:	5515		
Protein Accession No.:	NP_066283		
Immunogen:	Recombinant human PP2C α (1-382 aa) purified from <i>E. coli</i>		
Isotype:	Mouse IgG _{2b} heavy chain and κ light chain		
Clone:	Anti-human PP2C α mAb, clone p6c7, is derived from hybridization of mouse SP2/O myeloma cells with spleen cells from BALB/c mice immunized with recombinant human PP2C α protein.		
Formulation:	Liquid in phosphate buffered saline (PBS), pH 7.4, containing 0.02% sodium azide , 10% glycerol.		
Applications:	ELISA, Western Blot (WB), Immunofluorescence (ICC/IF)		
Application Notes:	The antibody has been tested by ELISA, WB and ICC/IF analysis to assure specificity and reactivity. Since application varies, each investigation should be titrated by the reagent to obtain optimal results.		
Storage & Stability:	Store at 4 °C short term. For long term aliquot and store at -20 °C. Avoid repeated freeze/thaw cycles.		



Western blot analysis the tissue lysates (40ug) were resolved by SDS-PAGE, transferred to PVDF membrane and probed with anti-human PP2C α antibody (1:1000). Proteins were visualized using a goat anti-mouse secondary antibody conjugated to HRP and an ECL detection system.



ICC/IF analysis of PP2C α in HeLa cells. The cell was stained with APP0401 (1:100). The secondary antibody (green) was used Alexa Fluor 488. DAPI was stained the cell nucleus (blue).



NOT FOR HUMAN USE. FOR RESEARCH ONLY. NOT FOR DIAGNOSTIC OR THERAPEUTIC USE.



Cell Sciences®
65 Parker Street
Unit 11
Newburyport, MA 01950

Toll Free: 888-769-1246
Phone: 978-572-1070
Fax: 978-992-0298

E-mail: info@cellsciences.com
Website: www.cellsciences.com