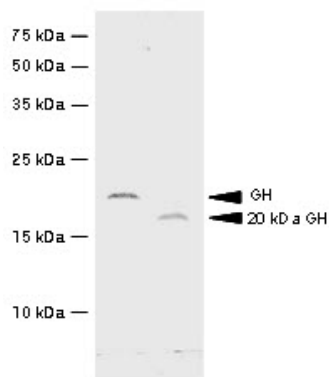


## GH1

### Mouse Anti-Human Growth Hormone Clone g3H5 mAb

<b>Catalog No.</b>	CSI15546A CSI15546B	<b>Quantity:</b>	50 µl 100 µl
<b>Alternate Names:</b>	GH, GH-N, GHN, hGH-N, pituitary growth hormone		
<b>Description:</b>	Human growth hormone (hGH, somatotropin), a protein hormone from the anterior lobe of the pituitary gland, comprises a single polypeptide chain of 191 amino acid residues. The 20 kDa variant form of human growth hormone (20 kDa hGH) presents in extracts from pituitary glands and it differs from the major form of hGH (22 kDa, 191 amino acid) by the deletion of amino acid residues 32-46. The growth hormone amino acid sequence varies considerably between species, and non-primate growth hormones have little activity in man. Main functions of hGH and 20 kDa hGH are the stimulation of somatic and bone growth, as well as an increase in the size and mass of organs and tissues.		
<b>Concentration:</b>	1 mg/ml		
<b>Gene ID:</b>	2688		
<b>Protein Accession No.:</b>	NP_000506		
<b>Immunogen:</b>	Recombinant human growth hormone (aa 27-217) purified from <i>E. coli</i>		
<b>Isotype:</b>	Mouse IgG <sub>2b</sub> heavy chain and κ light chain		
<b>Clone:</b>	Anti-human growth hormone mAb, clone g3H5, is derived from hybridization of mouse SP2/O myeloma cells with spleen cells from BALB/c mice immunized with recombinant growth hormone.		
<b>Formulation:</b>	Liquid. Supplied in Phosphate-Buffered Saline (pH 7.4) with 0.1% Sodium Azide. <b>Precaution:</b> Sodium azide is a poisonous and hazardous substance which should be handled by trained staff only.		
<b>Applications:</b>	ELISA, WB		
<b>Application Notes:</b>	The antibody has been tested by ELISA and Western blot analysis to assure specificity and reactivity. Since application varies, however, each investigation should be titrated by the reagent to obtain optimal results. Recommended dilution range for Western blot analysis is 1:500 ~ 1,000. Recommended starting dilution is 1:500.		
<b>Storage &amp; Stability:</b>	Can be stored at +4°C. For long term storage, aliquot and store at -20°C. <b>Avoid repeated freezing and thawing cycles.</b>		





NOT FOR HUMAN USE. FOR RESEARCH ONLY. NOT FOR DIAGNOSTIC OR THERAPEUTIC USE.



**Cell Sciences®**  
480 Neponset Street  
Bldg 12A  
Canton, MA 02021

Toll Free: 888-769-1246  
Phone: 781-828-0610  
Fax: 781-828-0542

E-mail: [info@cellsciences.com](mailto:info@cellsciences.com)  
Website: [www.cellsciences.com](http://www.cellsciences.com)