

## KIR2DS4

### Mouse Anti-Human KIR2DS4 Clone 5F2 mAb

<b>Catalog No.</b>	CSI15552A CSI15552B	<b>Quantity:</b>	50 µl 100 µl
<b>Alternate Names:</b>	CD158I, KIR1D, KIR412, KKA3, MGC120019, MGC125315, MGC125317, NKAT8, KIR antigen 2DS4, killer inhibitory receptor 4-1-2, natural killer cell inhibitory receptor		
<b>Description:</b>	The KIR family consists of transmembrane glycoproteins of the Ig superfamily expressed on human Nk cells and a subset of human T cells which they are involved in recognition of either MHC class I molecules or unknown ligand on target cells and inhibit cytotoxic activities. KIR2DS4 is an activating receptor of KIR family.		
<b>Concentration:</b>	1 mg/ml		
<b>Gene ID:</b>	3809		
<b>Protein Accession No.:</b>	NP_036446		
<b>Host:</b>	Mouse		
<b>Immunogen:</b>	Recombinant human KIR2DS4 purified from <i>E. coli</i>		
<b>Isotype:</b>	Mouse IgG2b heavy chain and κ light chain		
<b>Clone:</b>	Anti-human KIR2DS4 mAb, clone 5F2, is derived from hybridization of mouse SP2/0 myeloma cells with spleen cells from BALB/c mice immunized with a recombinant human KIR2DS4 protein.		
<b>Formulation:</b>	Liquid. Supplied in Phosphate-Buffered Saline (pH 7.4) with 0.1% Sodium azide. <b>Precaution:</b> Sodium azide is a poisonous and hazardous substance which should be handled by trained staff only.		
<b>Purification:</b>	By protein-G affinity chromatography		
<b>Usage:</b>	The antibody has been tested by ELISA and Western blot analysis to assure specificity and reactivity. Since application varies, however, each investigation should be titrated by the reagent to obtain optimal results. Recommended dilution range for Western blot analysis is 1:500 ~ 2,000. Recommended starting dilution is 1:1,000.		
<b>Antigen Species:</b>	Human		

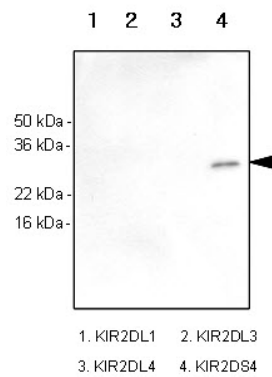


**Applications:** ELISA, WB (Recombinant protein)

**Application Notes:** **Western Blot Analysis**

Recombinant human kIR2DL1, kIR2DL3, kIR2DL4 and kIR2DS4 (each 100ng) were resolved by SDS-PAGE, transferred to PVDF membrane and probed with anti-human kIR2DS4 antibody (1:1,000). Proteins were visualized using a goat anti-mouse secondary antibody conjugated to HRP and an ECL detection system. Arrow indicates recombinant human kIR2DS4 protein.

**Storage & Stability:** Can be stored at +4C. For long term storage, aliquot and store at -20C. **Avoid repeated freezing and thawing cycles.**



**NOT FOR HUMAN USE. FOR RESEARCH ONLY. NOT FOR DIAGNOSTIC OR THERAPEUTIC USE.**