

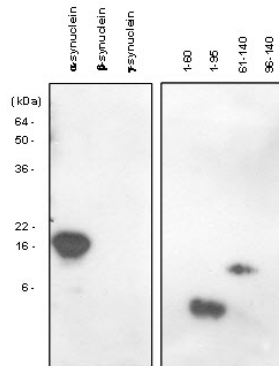
## SNCA

### Mouse Anti-Synuclein alpha (aa 61-95) Clone 5C2 mAb

<b>Catalog No.</b>	CSI15557A CSI15557B	<b>Quantity:</b>	50 µl 100 µl
<b>Alternate Names:</b>	MGC110988, NACP, PARK1, PARK4, PD1, alpha synuclein, alpha-synuclein, alpha-synuclein, isoform NACP140, non A-beta component of AD amyloid, non A4 component of amyloid		
<b>Description:</b>	alpha-synuclein (amino acids 1-140), an acidic neuronal protein of 140 amino acids, is extremely heat-resistant and is natively unfolded with an extended structure primarily composed of random coils. alpha-synuclein has been suggested to be implicated in the pathogenesis of Parkinson's disease and related neurodegenerative disorders, and more recently, to be an important regulatory component of vesicular transport in neuronal cells. Specially, the non-Abeta component of amyloid plaques (NAC, amino acids 61-95) is a highly amyloidogenic peptide consisting of 35 amino acids which was first identified associated with senile plaques in the Alzheimer's disease brain.		
<b>Concentration:</b>	1 mg/ml		
<b>Gene ID:</b>	6622		
<b>Protein Accession No.:</b>	NP_000336		
<b>Host:</b>	Mouse		
<b>Immunogen:</b>	Recombinant human alpha-synuclein (aa 61-95) purified from <i>E. coli</i>		
<b>Isotype:</b>	Mouse IgG1 κ		
<b>Clone:</b>	Anti-human alpha-Synuclein mAb, clone 5C2, is derived from hybridization of mouse SP2/0 myeloma cells with spleen cells from BALB/c mice immunized with a recombinant human alpha-synuclein protein. This antibody specifically recognizes alpha-synuclein only, particularly the NAC domain of alpha-synuclein.		
<b>Formulation:</b>	Liquid. Supplied in Phosphate-Buffered Saline (pH 7.4) with 0.1% Sodium Azide. <b>Precaution:</b> Sodium azide is a poisonous and hazardous substance which should be handled by trained staff only.		
<b>Purification:</b>	By protein-G affinity chromatography		
<b>Reacts With:</b>	Human		



- Applications:** ELISA, WB (Recombinant protein, Cell lysate)
- Application Notes:** The antibody has been tested by ELISA and Western blot analysis to assure specificity and reactivity. Since application varies, however, each investigation should be titrated by the reagent to obtain optimal results. Recommended dilution range for Western blot analysis is 1:500 ~ 1:2,000. This antibody (5C2) has the specificity against the NAC domain (61-95aa) of alpha-synuclein. Recommended starting dilution is 1:1,000.
- Storage & Stability:** Can be stored at +4C. For long term storage, aliquot and store at -20C. **Avoid repeated freezing and thawing cycles.**
- Western Blot Analysis:** The recombinant human synuclein family (alpha-, beta- and gamma-) and alpha-synuclein domains (1-60, 1-95, 61-140 and 96-140) proteins were resolved by SDS-PAGE, transferred to PVDF membrane and probed with anti-alpha-Synuclein (61-95 aa) antibody (1:1,000). Proteins were visualized using a goat anti-mouse secondary antibody conjugated to HRP and an ECL detection system.



**NOT FOR HUMAN USE. FOR RESEARCH ONLY. NOT FOR DIAGNOSTIC OR THERAPEUTIC USE.**

