

CTSH

Mouse Anti-Human Cathepsin H Clone 3G8 mAb

Catalog No.	CSI15559A CSI15559B	Quantity:	50 µl 100 µl
Alternate Names:	ACC-4, ACC-5, CPSB, MGC1519, minichain, N-benzoylarginine-beta-naphthylamide hydrolase, aleurain, cathepsin B3, cathepsin BA		
Description:	Cathepsin H is a lysosomal glycoprotein and a member of the cysteine proteinase. This cysteine protease class comprises cathepsin B, H, k, L, and O. These proteinases are viewed as simple mediators of lysosomal protein degradation. Cathepsin H is synthesized as an inactive proenzyme (41 kDa) and then proteolytically processed to an active single chain, mature form (28 kDa) within the endosomes/lysosomes. This proteinase is a peptidohydrolase that firstly isolated from rat liver, and then identified in liver, kidney, spleen, and brain of different mammals. Furthermore, cathepsin H is increased in disease states including breast carcinoma, melanoma, gliomas, and colorectal and prostate carcinoma.		
Concentration:	1 mg/ml		
Gene ID:	50808		
Protein Accession No.:	NP_004381		
Host:	Mouse		
Immunogen:	Recombinant human Cathepsin H (23-335 aa) purified from <i>E. coli</i>		
Isotype:	Mouse IgG2a κ		
Clone:	Anti-human cathepsin H mAb, clone 3G8, is derived from hybridization of mouse SP2/O myeloma cells with spleen cells from BALB/c mice immunized with a recombinant human cathepsin H protein.		
Formulation:	Liquid. Supplied in Phosphate-Buffered Saline (pH 7.4) with 0.1% Sodium azide. Precaution: Sodium azide is a poisonous and hazardous substance which should be handled by trained staff only.		
Purification:	By protein-G affinity chromatography		
Reacts With:	Human		
Applications:	ELISA, WB (Recombinant protein, Cell lysate)		
Application Notes:	The antibody has been tested by ELISA, Western blot and immunohistochemistry analysis to assure specificity and reactivity. Since application varies, however, each investigation should be titrated by the reagent to obtain optimal results. Recommended dilution range for Western blot analysis is 1:500 ~ 1:2,000. Recommended starting dilution is 1:1,000.		

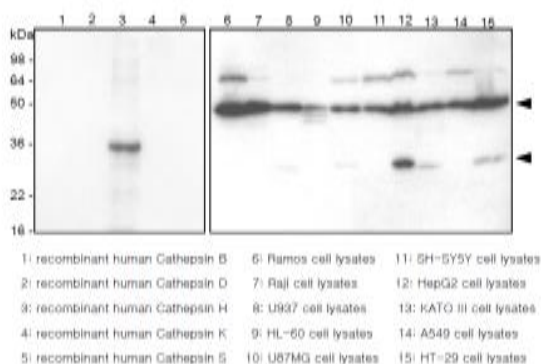


Storage & Stability: Can be stored at +4C. For long term storage, aliquot and store at -20C. **Avoid repeated freezing and thawing cycles.**

Western Blot Analysis: The recombinant proteins (Cathepsin B, D, H, k and S), and the extracts (40ug) of various tumor cell lines were resolved by SDS-PAGE, transferred to PVDF membrane and probed with anti-human cathepsin H antibody (1:1,000). Proteins were visualized using a goat anti-mouse secondary antibody conjugated to HRP and an ECL detection system. The upper arrow is a precathepsin H form, and the lower arrow is a mature form of cathepsin H.

Western blot analysis

The recombinant proteins (Cathepsin B, D, H, K and S), and the extracts (40ug) of various tumor cell lines were resolved by SDS-PAGE, transferred to PVDF membrane and probed with anti-human cathepsin H antibody (1:1,000). Proteins were visualized using a goat anti-mouse secondary antibody conjugated to HRP and an ECL detection system. The upper arrow is a precathepsin H form, and the lower arrow is a mature form of cathepsin H.



NOT FOR HUMAN USE. FOR RESEARCH ONLY. NOT FOR DIAGNOSTIC OR THERAPEUTIC USE.



Cell Sciences®
480 Neponset Street
Bldg 12A
Canton, MA 02021

Toll Free: 888-769-1246
Phone: 781-828-0610
Fax: 781-828-0542

E-mail: info@cellsciences.com
Website: www.cellsciences.com