

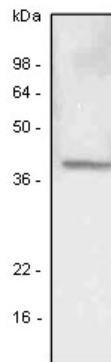
LYVE1

Mouse Anti-Human Lymphatic Vessel Endothelial Hyaluronan Receptor 1 Clone 4G1 mAb

Catalog No.	CSI15560A CSI15560B	Quantity:	50 µl 100 µl
Alternate Names:	CRSBP-1, HAR, LYVE-1, XLKD1, lymphatic vessel endothelial hyaluronan receptor 1		
Description:	Lymphatic vascular endothelial hyaluronan receptor-1 (LYVE-1), a selective marker of the lymphatic endothelium, is a surface endocytic receptor for hyaluronan (HA), which is an extracellular glycosaminoglycan involved in cell adhesion and migration. HA is widely expressed on leukocytes, dendritic cells, and tumor cell, and is identified by searching expressed sequence tag (EST) databases for sequences homologous (41%) with the metastasis related CD44 molecules.		
Concentration:	1 mg/ml		
Gene ID:	10894		
Protein Accession No.:	NP_006682		
Host:	Mouse		
Immunogen:	Recombinant human LYVE-1 (aa 25-235) purified from <i>E. coli</i>		
Isotype:	Mouse IgG2b κ		
Clone:	Anti-human LYVE-1 mAb, clone 4G1, is derived from hybridization of mouse SP2/O myeloma cells with spleen cells from BALB/c mice immunized with a recombinant human LYVE-1 protein.		
Formulation:	Liquid. Supplied in Phosphate-Buffered Saline (pH 7.4) with 0.1% Sodium azide. Precaution: Sodium azide is a poisonous and hazardous substance which should be handled by trained staff only.		
Purification:	By protein-G affinity chromatography		
Reacts With:	Human		
Applications:	ELISA, WB (Cell lysate)		
Application Notes:	The antibody has been tested by ELISA and Western blot analysis to assure specificity and reactivity. Since application varies, however, each investigation should be titrated by the reagent to obtain optimal results. Recommended dilution range for Western blot analysis is 1:500 ~ 1,000. Recommended starting dilution is 1:1,000.		
Storage & Stability:	Can be stored at +4C. For long term storage, aliquot and store at -20C. Avoid repeated freezing and thawing cycles.		



Western Blot Analysis: A549 (lung carcinoma) cell lysate was resolved by SDS-PAGE, transferred to PVDF membrane and probed with anti-human LYVE-1 antibody (1:500). Proteins were visualized using a goat anti-mouse secondary antibody conjugated to HRP and an ECL detection system.



NOT FOR HUMAN USE. FOR RESEARCH ONLY. NOT FOR DIAGNOSTIC OR THERAPEUTIC USE.



Cell Sciences®
480 Neponset Street
Bldg 12A
Canton, MA 02021

Toll Free: 888-769-1246
Phone: 781-828-0610
Fax: 781-828-0542

E-mail: info@cellsciences.com
Website: www.cellsciences.com