

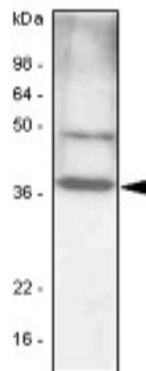
CEBPB

Mouse Anti-Human C/EBP-beta Clone 47A1 mAb

Catalog No.	CSI15562A CSI15562B	Quantity:	50 µl 100 µl
Alternate Names:	LAP, LIP, CRP2, TCF5, IL6DBP, NF-IL6, C/EBP-beta		
Description:	CCAAT/enhancer-binding proteins (C/EBPs) are a family of basic leucine zipper (bZIP) DNA binding proteins that play important roles in normal cellular differentiation and function in a variety of tissues. The C/EBP family is critical for innate immunity and inflammatory response, and consists of five core members: C/EBP alpha, C/EBP beta, C/EBP delta, C/EBP epsilon, and C/EBP gamma. Among these proteins, C/EBP beta is usually highly expressed in liver, intestine, lung and adipose. C/EBP beta has three isoforms, two activator, (LAP* and LAP) and a repressor (LIP). These isoforms are differentially translated from the same mRNA. The expression of these isoforms is developmentally and hormonally regulated.		
Concentration:	1 mg/ml		
Gene ID:	1051		
Protein Accession No.:	NP_005185		
Usage:	The antibody has been tested by ELISA and Western blot analysis to assure specificity and reactivity. Since application varies, however, each investigation should be titrated by the reagent to obtain optimal results. Recommended dilution range for Western blot analysis is 1:500 ~ 2,000. Recommended starting dilution is 1:1,000.		
Host:	Mouse		
Immunogen:	Recombinant human C/EBP-beta (1-271 aa) purified from <i>E. coli</i>		
Isotype:	IgG1 k		
Clone:	Anti-human C/EBP beta mAb, clone 47A1, is derived from hybridization of mouse SP2/O myeloma cells with spleen cells from BALB/c mice immunized with a recombinant human C/EBP beta protein.		
Conjugate:	unconjugated		
Formulation:	Liquid. Supplied in Phosphate-Buffered Saline (pH 7.4) with 0.1% Sodium azide. Precaution: Sodium azide is a poisonous and hazardous substance which should be handled by trained staff only.		
Purification:	By protein-G affinity chromatography		
Cross-Reactivity:	Human, mouse Note: Cross-reactivity hasn't been tested with other species.		
Applications:	ELISA, WB (Cell lysate)		



- Application Notes:** The antibody has been tested by ELISA and Western blot analysis to assure specificity and reactivity. Since application varies, however, each investigation should be titrated by the reagent to obtain optimal results. Recommended dilution range for Western blot analysis is 1:500 ~ 2,000. Recommended starting dilution is 1:1,000.
- Storage & Stability:** Can be stored at +4°C. For long term storage, aliquot and store at -20C. **Avoid repeated freezing and thawing cycles.**
- Western Blot Analysis:** NIH 3T3 cell lysates(30ug) were resolved by SDS-PAGE, transferred to PVDF membrane and probed with anti-human C/EBP-beta antibody (1:1,000). Protein was visualized using a goat anti-mouse secondary antibody conjugated to HRP and an ECL detection system.



NOT FOR HUMAN USE. FOR RESEARCH ONLY. NOT FOR DIAGNOSTIC OR THERAPEUTIC USE.



Cell Sciences®
480 Neponset Street
Bldg 12A
Canton, MA 02021

Toll Free: 888-769-1246
Phone: 781-828-0610
Fax: 781-828-0542

E-mail: info@cellsciences.com
Website: www.cellsciences.com