

BMP7

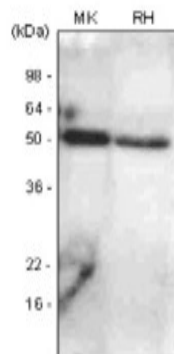
Mouse Anti-Human BMP-7 Clone 4E7 mAb

Catalog No.	CSI15566A CSI15566B	Quantity:	50 µl 100 µl
Alternate Names:	OP-1		
Description:	BMP-7 (bone morphogenetic protein-7), also known as OP-1 (osteogenic protein-1), is a member of the transforming growth factor beta (TGFβ) superfamily. BMP-7 plays an essential role during ontogeny of the mammalian eye and kidney, also, is expressed in heart, lung, small intestine, limb bud and teeth. In addition, noggin, one of the soluble BMP antagonists, regulated the action of BMPs on mesenchymal precursor cells, partially through a feedback type of inhibition.		
Concentration:	1 mg/ml		
Gene ID:	655		
Protein Accession No.:	NP_001710		
Host:	Mouse		
Immunogen:	Recombinant human BMP7 (aa 293-431) purified from <i>E. coli</i>		
Isotype:	Mouse IgG ₁ heavy chain and κ light chain		
Clone:	Anti-human BMP7 mAb, clone 4E7, is derived from hybridization of mouse SP2/O myeloma cells with spleen cells from BALB/c mice immunized with a recombinant human BMP7 protein.		
Formulation:	Liquid. Supplied in Phosphate-Buffered Saline (pH 7.4) with 0.1% Sodium azide. Precaution: Sodium azide is a poisonous and hazardous substance which should be handled by trained staff only.		
Purification:	By protein-G affinity chromatography		
Cross-Reactivity:	Human, Mouse, Rat		
Applications:	ELISA, WB (Cell lysate)		
Application Notes:	The antibody has been tested by ELISA and Western blot analysis to assure specificity and reactivity. Since application varies, however, each investigation should be titrated by the reagent to obtain optimal results. Recommended dilution range for Western blot analysis is 1:500 ~ 2,000. Recommended starting dilution is 1:1,000.		



Storage & Stability: Can be stored at +4C. For long term storage, aliquot and store at -20C. **Avoid repeated freezing and thawing cycles.**

Western Blot Analysis: The extracts of mouse kidney (Mk) and rat heart (RH) were resolved by SDS-PAGE, transferred to PVDF membrane and probed with anti-human BMP7 antibody (1:1,000). Protein was visualized using a goat anti-mouse secondary antibody conjugated to HRP and an ECL detection system.



NOT FOR HUMAN USE. FOR RESEARCH ONLY. NOT FOR DIAGNOSTIC OR THERAPEUTIC USE.



Cell Sciences®
480 Neponset Street
Bldg 12A
Canton, MA 02021

Toll Free: 888-769-1246
Phone: 781-828-0610
Fax: 781-828-0542

E-mail: info@cellsciences.com
Website: www.cellsciences.com